

# The Entire Hours

HOWARD COLLEGE











Ex Libris





*The*

COPYRIGHTED, 1934

BESS MCCOMAS • EDITOR-IN-CHIEF

CLAUDE SMITH • BUSINESS MANAGER



*Entre Nous*  
*of 1934*

A

YEAR BOOK  
PUBLISHED BY  
THE STUDENTS

*of*

*Howard College*

BIRMINGHAM, ALABAMA





*The*

## CONTENTS

	• Alma Mater
The Classes	• •
Athletics	• • •
• •	Activities
Fraternities	•
Features and Ads	



# FOREWORD

To preserve the pleasanter memories of your college days. To present a tangible evidence of the friendships, the activities, and the traditions which have increased your growth. To stimulate your loyalty to Alma Mater. These are the aims of the ENTRE NOUS of 1934





# The

We dedicate this volume to the President of the United States. The men and women who are the Class of 1934 in every college in our country are closer to reality than any other class has been. Mr. Roosevelt's heady youthful spirit and high faith stir us like the blast of a lonely trumpet and we follow eagerly as he leads out of difficulties that have solemnized even the youth of America. We offer allegiance to the President—

we give our affectionate  
enthusiasm to

Franklin Delano Roosevelt




# DEDICATION



FRANKLIN DELANO ROOSEVELT





# "Cotton

The great South stands ready to support our President in all that he undertakes. The South is a section rich in tradition. The South is a section of great strength. Despite hardships it has flourished and grown, and the most important factor in its development has been cotton. It has been a forceful influence on the political, social and economic life of the people. In days to come industry may dethrone it, but so far ~ ~ ~

"Cotton Am King"



# AM KING”



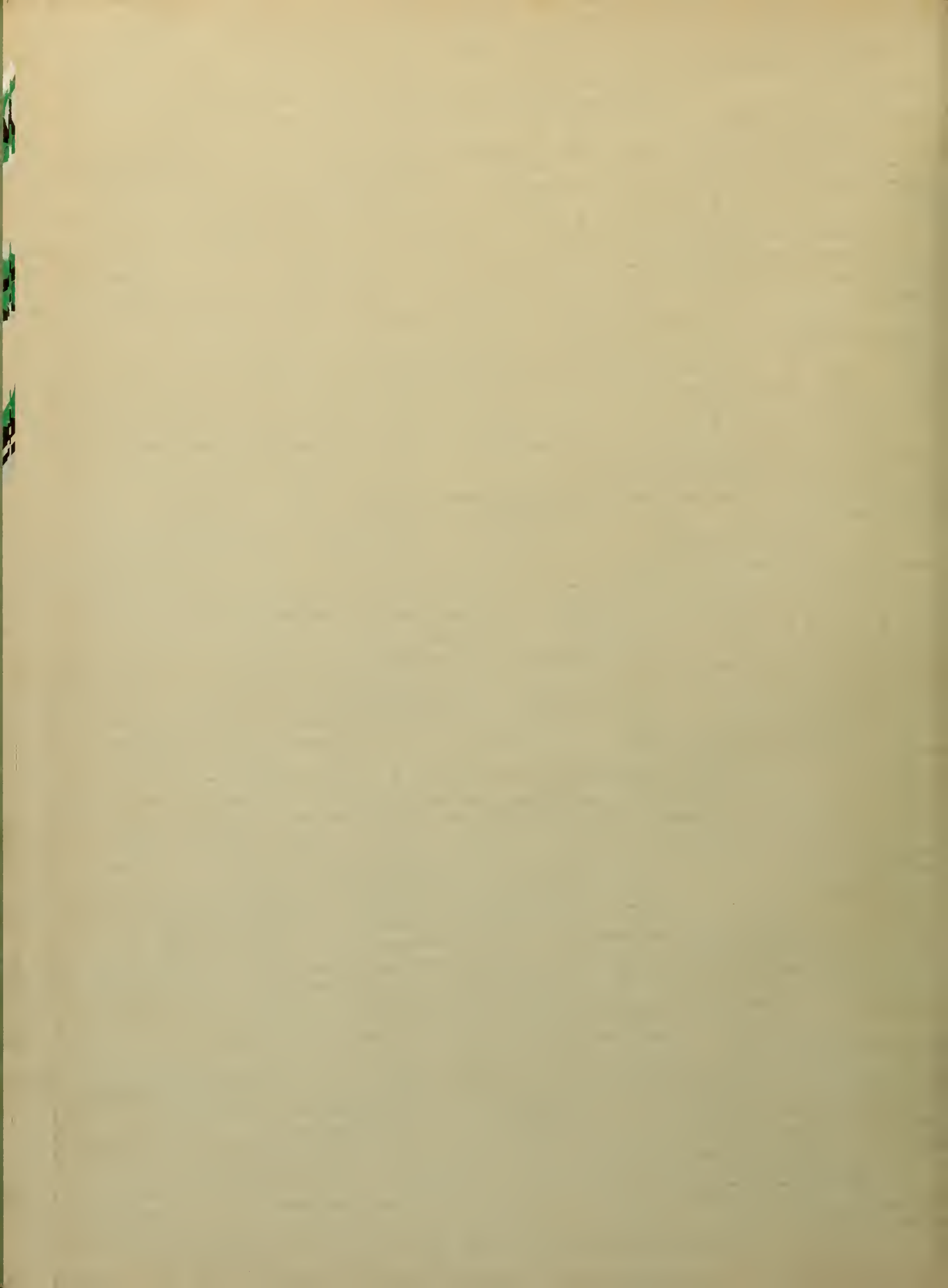






A L M A M A T E R





# A PEEP AT HOWARD

*A* VIEW of the lovely campus, a glimpse at far horizons, a peep at student life at Howard, seen through the graceful arches of "Old Main."







●

### **DR. T. V. NEAL**

A man of indomitable will, of undaunted courage, of keen vision and deep spiritual conviction, Dr. T. V. Neal guides not only the institution, but the lives of the students by whom he is sincerely loved.

## **A TRIBUTE TO PRESIDENT NEAL**

*D*R. THOMAS V. NEAL, an alumnus of Howard College, has proven himself to be peculiarly fitted for the task of being its leader. He has been at Howard for two years—years in which other colleges have stopped construction, reduced their faculties, and had their enrollments reduced. Howard, under the direction of Dr. Neal, has increased its number of buildings, added to its faculty, and enlarged its student body.

# THE SCIENCE HALL

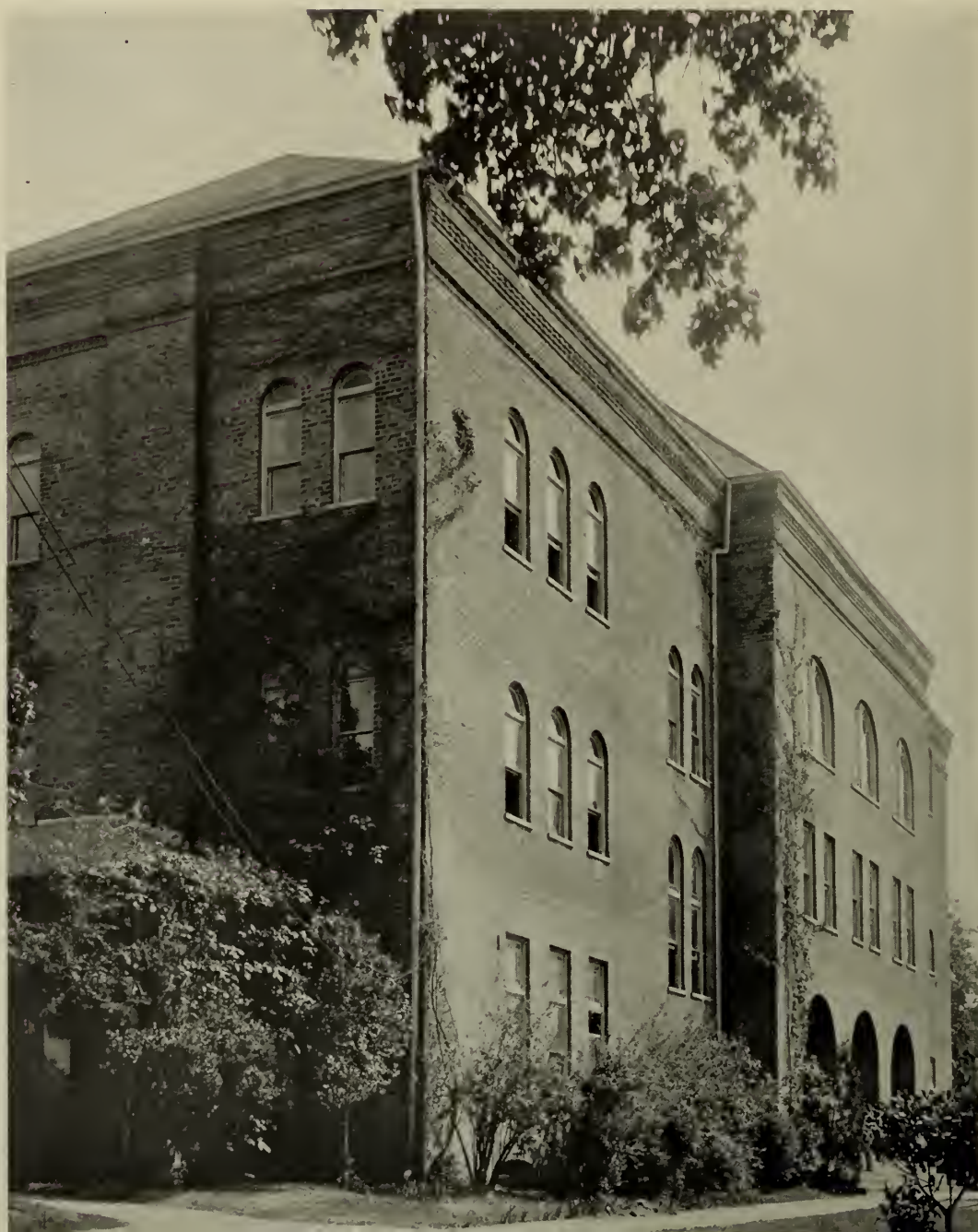
*I*N THE spring of 1922, a Science Hall was erected to house the chemistry, physics, and biology departments. In 1933 this building was enlarged, remodeled, and brick veneered to accommodate, in addition to the chemistry, physics, and biology departments, the new school of pharmacy. Conceived in time of stress, erected despite discouragement, this modern building stands, a tangible proof of the value of vision, a monument to untiring effort.

● **“Dreams that found their way in brick and stone.”**



## THE MAIN BUILDING

*A*CADEMIC HALL, or "Main Building," was erected in 1889, and is the center of activities on the campus, as well as being the central building of the college group. It is an edifice rich in tradition, holding myriad memories dear to the hearts of those who have passed through its corridors.







## THE CAUSEY GYMNASIUM

*A* TIME for work, a time for play," and this gymnasium, erected in 1930, offers a place indeed fitted for constructive, wholesome recreation, which must be an important part of well-rounded college life. It was named, by the vote of the student body, for the registrar, O. S. Causey, and houses ample basketball courts, lockers, showers, reception rooms, editorial quarters and offices.

●



## **GIRLS' DORMITORY**

*T*HE Girls' Dormitory and the sorority houses offer a lovely setting for the home and social life of the Howard co-eds. The five sorority houses, recently erected, provide reception rooms, offices and chapter rooms for the sororities. The dormitory affords spacious living quarters for the boarding students, a dining room, the home economics laboratories, and a general reception room.

## **NEW SORORITY HOUSES**





*The*  
**COLLEGE CHURCH**

*C*LOSELY allied with Howard College and the life of her students is Ruhama Baptist Church, one of the oldest Baptist Churches in the state, having recently celebrated its one hundred and fifteenth anniversary. The College Church originates all religious activities for the students, and it is here that many of them have their church letters.





## A SNAPSHOT

STUDENT life at Howard is never dull, but always varied and exciting. Among the high lights of the year are football season, the Howard-Southern Parade, Hypatia tap day, the visits of sorority inspectors, and innumerable "campus courses." The camera has caught a few of these in kaleidoscopic fashion. May we explain that—

Her coquetry was duly rewarded . . . The Delta Zetas are "lined up" with their charming inspecting officer . . . This, believe it or not, is the way the retiring editor of the *Crimson* looked only a few decades ago, when he entered college . . . Hypatia's select seven . . . Our band . . . And



## STORY OF THE CAMPUS

someone's else . . . "Orchids" to our cheer leader . . . Carnations and Phi Mu's . . . These boys seem to have the right viewpoint . . . The prides and joys of four nice boys . . . Big mistake—this should be in *La Revue* . . . "Heard melodies are sweet, But those unheard are sweeter" . . . The editor's brain child . . . Hypatia and W. A. A. share her . . . A couple of pals? . . . She's a sweet young thing . . . Just a little ray of sunshine . . . The D. Z.'s . . . Smiles . . . Howard on Parade . . . Four great boys—they'd make nice "brothers" . . . The Unholy Three . . . Fair representatives, well escorted . . . This has gone on all year . . .

# FACULTY

THOMAS V. NEAL

Π K Φ

*President*

A.B., Howard College; Graduate Student, Southern Baptist Theological Seminary; D.D., Baylor University.

PERCY P. BURNS

*Dean*

*Professor of English*

A.B., Howard College; A.M., Harvard University; Litt.D., Mercer University.

HUL-CEE M. ACTON

*Professor of Romance Languages*

A.B., Georgetown College; A.M. Ph.D., University of Wisconsin; Student in University of Paris, 1925-26 as holder of Albert Markham Memorial Graduate Traveling Fellowship.

EMILY CATE

*Director of Physical Education for Women*

B.S., North Carolina College for Women; M.S., University of South Carolina.

PAUL D. BALES

*Professor of Physics*

B.S., University of Chattanooga; A.M., University of Indiana; further graduate work, University of Indiana.

OSCAR S. CAUSEY

Σ N

*Registrar*

*Associate Professor of Biology*

A.B., A.M., Howard College; graduate student, Western State College, Colorado; University of Colorado; University of Denver; University of Chicago.

JOSIAH D. BANCROFT

Σ N

*Instructor in Biology*

A.B., Howard College; M.D., Tulane University.

JAMES H. CHAPMAN

K Σ

*Professor of Religious Education*

A.B., A.M., University of Alabama; Th.M., Southern Baptist Theological Seminary; graduate student, Boston University, Columbia University.

WILLIAM H. BANCROFT

Σ N

*Instructor in Athletics*

A.B., Howard College.

ELLISON COSBY

*Instructor in Mathematics*

A.B., Howard College.

PAUL BARNETT

Θ K N

*Instructor in Economics*

A.B., Howard College.

RAYMOND DAVIS

6 K N

*Instructor in Athletics*

A.B., Howard College.

C. HOWARD BLANTON

*Instructor in Pharmacy*

B.S., Howard College.

L. O. DAWSON

*Professor of Bible and Church History*

A.B., D.D., Howard College; Th.B., Southern Baptist Theological Seminary; Post-Graduate Work, Germany, University of Alabama, Columbia University.

ORA D. BOHANNON

Δ Z

*Instructor in Modern Languages*

A.B., A.M., Howard College.

WILLIAM E. BOHANNON

*Professor of Education*

A.B., A.M., Indiana State University; Graduate Student University of Chicago.

PAUL DE LAUNNEY

*Professor of French and Director of Music*

A.B., Lic.Mus., University of Paris; Doc.Mus. (Hon.), Paris Conservatory.

MARIE BOST

*Assistant Librarian*

ANNIE B. BOYETT

Φ M

*Instructor in English*

A.B., Howard College; A.M., Columbia University.

THEOPHILUS R. EAGLES

*Professor of Mathematics*

A.B., A.M., University of North Carolina.

JAMES LUTHER BRAKEFIELD

Σ A E

*Professor of Biology*

A.B., Union University; A.M., Baylor University; Ph.D., (Medical Science), University of California.

ROY CURTIS GREEN

*Instructor in Pharmacy*

A.B., Howard College; M.D., Tulane University.

JAMES KIMMINS GREER

*Professor of History*

A.B., M.A., Ph.D., University of Texas.



# FACULTY

FRENCH HAYNES  
A Δ Θ

*Dean of Women*

*Associate Professor of English*

A.B., Meredith College; A.M., Ph.D., Cornell University.

JAMES A. HENDRICKS

*Professor of Sociology*

A.B., A.M., Howard College; Th.B., Southern Baptist Theological Seminary; Graduate Student, Columbia University, University of Chicago.

GEORGE W. HESS

*Professor of Mathematics*

A.B., Kalamazoo College; A.M., University of Kansas; Ph.D., University of Michigan.

MRS. B. C. HOLLIDAY

*Instructor in Secretarial Studies*

A.C.A., Bowling Green Business University; Candidate for A.B. degree, June, 1933.

LENORE HOLLOWAY

*Instructor in Home Economics*

GEORGE V. IRONS

*Instructor in History*

LOUIS W. LOHR

*Professor of Economics*

A.B., University of Illinois; M.B.A., Northwestern University; Further Graduate Study in University of Chicago.

VERNON L. MANGUN

*Professor of Secondary Education*

A.B., Cornell College; A.M., Iowa State University; Ph.D., Columbia University.

HENRY M. MARTIN

Φ B K

*Professor of Spanish*

A.B., A.M., University of Richmond; Ph.D., Johns Hopkins University.

AUGUSTUS H. MASON

Σ Φ E

*Professor of English*

A.B., Ohio Wesleyan University; Docteur d'Université, University of Paris.

KENNETH McDONALD

Φ Σ K

*Instructor in History*

S.B., Massachusetts Institute of Technology; A.M., University of Alabama; Residence Work Completed for Ph.D. at Columbia University.

LOVICK P. McLANE

Π K A

*Director of Athletics*

A.B., Maryville College; A.M., Howard College.

W. E. PRESCOTT

Π K Φ

*Lecturer in Biology*

A.B., B.S. in Med. University of Alabama; M.D. Rush Medical College.

JOHN FISHER ROTHERMEL

Φ B K

*Instructor in Journalism*

A.B., University of Alabama; A.M., Birmingham-Southern College.

JOHN R. SAMPEY, JR.

*Professor of Chemistry*

S.B., S.M., Ph.D., University of Chicago; Research Fellow, Johns Hopkins University; Research Fellow, American Petroleum Institute.

BERTHA SEVERIN-FROST

*Instructor in Voice*

ANTOINETTE SPARKS

A Γ Δ

*Instructor in Dramatic Art*

A.B., University of Alabama.

WILLIAM N. THOMAS

Δ K E

*Professor of Ancient Languages*

A.B., A.M., Colgate University; Graduate Student in the Latin School, Rome Italy and in American Classical School, Athens, Greece.

THERA MAE TOWERY

Δ Z

*Instructor in Biology*

B.S., Mississippi State College for Women; A.M., University of Alabama.

ALIDA TOWNES

*Instructor in Art*

WINNIE MAE TUMA

*Instructor in Athletics*

FRANCIS M. WHEELER, SR.

*Instructor in Voice*

Mus.D., Lawrence College.

MABEL WILLOUGHBY

Φ M

*Librarian*

A.B., Howard College; A.B., (Library Science), Emory University.

JOHN XAN

*Professor of Chemistry*

B.S., Kalamazoo College; M.S., Ph.D., University of Chicago.

# HOWARD'S FOUR-STAR ★ ★ ★ ★ MEN

Every mother is duly proud of an illustrious son, and Howard, beloved alma mater of thousands, is no exception. Sons of Howard have been men of prominence in many professions for more than three-quarters of a century, and Howard alumni are still achieving—some as lawyers, some as educators, some as authors, doctors or scientists, and many as ministers and missionaries. It is Howard's wish to give recognition to them, in this small way, for their noteworthy achievements.

- DR. W. W. ADAMS—*Professor*, Eastern Theological Seminary, Philadelphia, Pennsylvania.
- A. C. ANDERSON—*Director of Extension*, Alabama College, Montevallo, Ala.
- W. A. BERRY—*Chairman, Board of Trustees*, Howard College.
- DR. G. W. BOULDIN, *President*, Missionary College, Fukuoka, Japan.
- PERCY P. BURNS—*Dean*, Howard College.
- FRANCIS G. CAFFEE—*Federal Judge*, New York City.
- REV. W. H. CARSON—*Missionary*, Lagos, Africa.
- DR. JOHN C. DAWSON—*Head of Department of Romance Languages*, University of Alabama; former president of Howard College.
- DR. L. O. DAWSON—*Minister, author, professor*.
- DR. J. S. DILL—*Editor, Baptist Courier*, Greenville, S. C.
- DR. M. B. GARRETT—*Professor of History*, University of North Carolina.
- HUGH GRANT—*Western European Division, Department of State*.
- DR. W. S. HENDRIX—*Professor of Spanish*, Ohio State University.
- DR. R. A. LAMBERT—*Director of the Columbia University School of Tropical Medicine*, University of Puerto Rico.
- DR. DAVID G. LYON—*Professor emeritus*, Harvard University.
- DR. C. P. McCORD—*Director, Industrial Health Conservancy Laboratories*, Cincinnati, Ohio.
- DR. ALLEN J. MOON—*Dean*, William Jewell College, Liberty, Missouri.
- DR. T. V. NEAL—*President*, Howard College.
- REV. ROSWELL OWENS—*Missionary*, Jerusalem, Palestine.
- DR. GEORGE PAPPAS—*College President*, Chicago, Illinois.
- DR. E. P. PUCKETT—*Dean*, Central College, Fayette, Missouri.
- REV. J. M. ROGERS—*Missionary to China*.
- DR. JOHN R. SAMPEY—*President*, Baptist Theological Seminary, Louisville, Kentucky.
- DR. H. P. SHUGERMAN—*Physician*, Birmingham, Alabama.
- EDGAR VALENTINE SMITH—*Author and editorial writer*.
- DR. E. M. THIGPEN—*Specialist*, Montgomery, Alabama.
- L. E. THOMAS—*Attorney*, Shreveport, Louisiana.
- J. FRITZ THOMPSON—*Circuit Judge*, Birmingham, Alabama.
- DR. J. B. TIDWELL—*Professor*, Baylor University.
- DR. J. B. TRANT—*Dean*, School of Commerce, Louisiana State University.
- DR. J. B. WARD—*Head of Department of Romance Languages*, Alabama College, Montevallo, Alabama.
- H. Y. WEISSINGER—*Oldest living alumnus of Howard College*.
- DR. H. J. WILLINGHAM—*President*, Florence State Normal, Florence, Alabama.

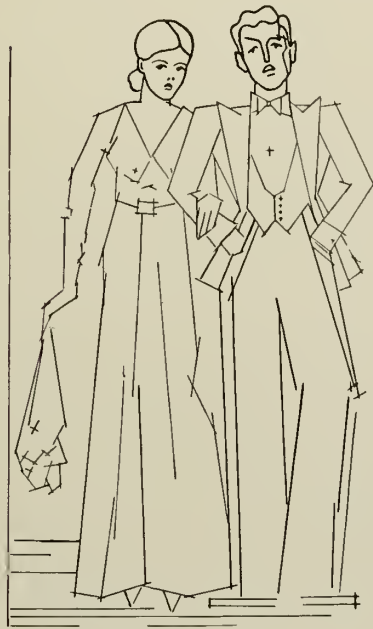


T H E C L A S S E S









SENIOR CLASS OFFICERS

- HENRY SMITH . . . . . *President*
- HERBERT LYKES . . . . . *Vice-President*
- DOROTHY CASON . . . . . *Secretary*
- PETE ESTES . . . . . *Treasurer*

S · E · N · I · O · R · S





## SENIOR CLASS

(Top Row)

MARY ELLA ALGEE, A.B.  
BIRMINGHAM, ALA.

A Δ II

Y. W. C. A. Cabinet (1, 2, 3, 4); Allied Arts Club;  
Howard Masquers; Girl's Glee Club (1, 2); Book-  
lover's Club; Secretary (3).

JOE E. ANDERSON, B.S.  
THOMASVILLE, ALA.

MARY ANDERSON, A.B.  
THOMASVILLE, ALA.

A Δ II

Judson College (1, 2); Vice-President Howard Mas-  
quers (3, 4); *Lady Windermere's Fan*; *Taming of the*  
*Shrew*; *Dulcy*; *Sleeping Princess*; President Women's  
Dormitory Council (4); Y. W. C. A. (1, 2, 3, 4).

(Bottom Row)

GEORGE ANDREVILLE, B.S.  
NEW YORK, N. Y.

MRS. J. H. AVERY, A.B.  
BIRMINGHAM, ALA.

University of Georgia (1, 2); Y. W. C. A. (1, 2);  
Home Economics Club (1, 2); Floco Girl's Club (2);  
Sophomore Chorus; Honor Roll (3, 4); Mission Band  
(3, 4); Glee Club; Y. W. A.

JOHN BARNES, A.B.  
OCEAN SPRINGS, MISS.

Basketball (1, 2); Ministerial Association (1, 2, 3);  
Vice-President (1); B. S. U., Vice-President (1);  
President (2); Vice-President Student Body (4); Chair-  
man Election Committee (4); Trident Club (4); Vice-  
President; President S. S. C. (4); Band (1, 2, 3).



## SENIOR CLASS

(Top Row)

MADA BERRY, A.B.  
BIRMINGHAM, ALA.  
A Δ Θ, Δ K, B Π Θ

Birmingham News Scholarship; Freshman Commission, Y. W. C. A. (1); Director Freshman Commission (2); W. A. A. Board (2); Booklover's Club (1, 2, 3); Reporter (3); Y. W. C. A. Treasurer (3); *Crimson* Staff (2, 3); ENTRE NOUS Staff (3); Glee Club (2, 3, 4); Hypatia, Secretary-Treasurer; Beta Pi Theta, Recording Secretary (4); Y. W. C. A., President (4); B. S. U. Council (4); Beauty Parade (4); Band Sponsor, Millsaps and Southern games; Honor Roll (1, 2); Masquers (3, 4); Varsity Debating Team (3).

A. W. BOSWELL  
LEEDS, ALA.

MILDRED ORMOND BROOK, A.B.  
BIRMINGHAM, ALA.  
B Π Θ

W. A. A. Board (1, 2); Vice-President, W. A. A. (3); Honor Roll (1, 2, 3, 4); Vice-President, Beta Pi Theta (3); President (4); President, Hypatia (4); Y. W. C. A. Cabinet (4); Social Science Club (4); Junior Stunt; Beauty Parade (4); Class Manager, Basketball and Hockey; W. A. A. Conference (3).

(Bottom Row)

ELIZABETH BROWN, A.B.  
BIRMINGHAM, ALA.  
Φ M

*Crimson* Staff; ENTRE NOUS Staff (1, 2); Parade Committee; Constitutional Committee; Pan-Hellenic Council; Glee Club; Secretary, Freshman Class; Social Science Club; Beauty Parade.

MARY KAY BROWN, B.S.  
BIRMINGHAM, ALA.  
A Δ Θ, X Δ Φ

Secretary Social Science Club (4); Vice-President, Chi Delta Phi (4); Booklover's Club (3, 4); Y. W. C. A.

DOROTHY CASON, B.S.  
BIRMINGHAM, ALA.  
Δ Z

Y. W. C. A. Cabinet (3); Social Committee (3); Basketball (1, 2, 3); Manager Freshman Athletics (1); Baseball (1, 2, 3); Captain (1); W. A. A. Board (1, 2, 3); Manager Track (3); Vice-President Women's Student Government (3); Student Council (3); Honor Roll (2, 3); Secretary, Senior Class.





## SENIOR CLASS

*(Top Row)*

GLENDOLYN COLE, A.B.  
BIRMINGHAM, ALA.

Δ Z

KATHLEEN COONER, A.B.  
BIRMINGHAM, ALA.

Girl's Glee Club; Social Science Club; Booklover's Club; Mission Band; Secretary, W. A. A.

ANNE DAVIE, A.B.  
BIRMINGHAM, ALA.

Louisiana Tech (1, 2, 3); Beauty Section (1, 3); Sponsor, Homecoming Day (1, 3); Pan-Hellenic Style Revue (1); Spanish Club (1, 2, 3); International Relations Club (1, 3); Y. W. C. A. (1, 3); W. A. A. (1, 3); K. O. A. (3); Beauty Parade (4); Honor Roll (4).

*(Bottom Row)*

THOMAS DOUGLAS, B.S.  
BIRMINGHAM, ALA.

Σ N, Π Γ M

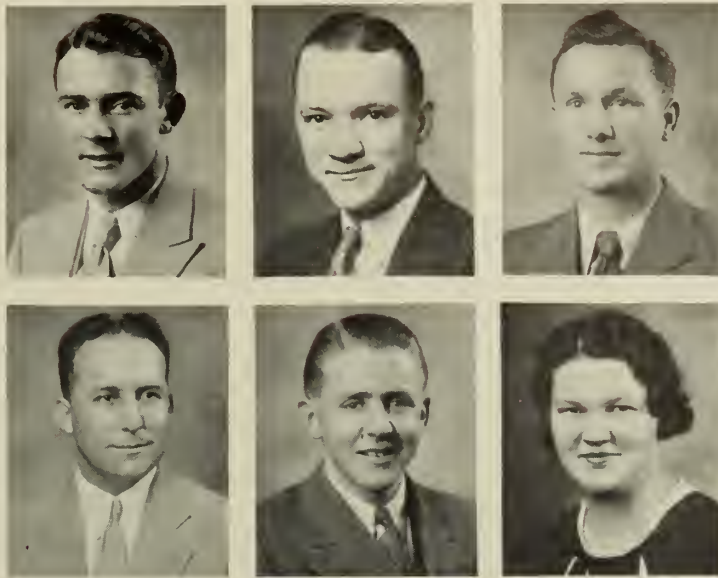
Howard Masquers; Y. M. C. A. Cabinet; Honor Roll (1).

CHESTER ELAM, B.S.  
ADDISON, ALA.

HICKMAN EWING, A.B.  
MEMPHIS, TENN.

Θ K N, K Φ K

Football (1, 2, 3, 4); Baseball (1, 2); Basketball (1, 2); Vice-President, Sophomore Class; President, "H" Club (4).



## SENIOR CLASS

(Top Row)

ROY FAYET  
ENSLEY, ALA.

Π Κ Α

President, Junior Class; Secretary, Sophomore Class; *Crimson* Staff (2, 3); ENTRE NOUS Staff (2, 4); Baseball (1, 2, 3); Football (1, 2, 3, 4); Captain (4); Vice-President Men's Pan-Hellenic; "H" Club; Best All-Round Boy (3).

MARVIN GARDNER, A.B.  
GAYLESVILLE, ALA.

Ministerial Association (1, 2, 3, 4); Treasurer (2, 3); Vice-President (3); President (4); B. S. U. Council (1, 3, 4); Mission Band (1, 3); Y. M. C. A. Cabinet (3); President, College B. Y. P. U. (3); Senior President, East Lake B. Y. P. U. District (3, 4).

RUSSELL GARRETT  
ALBERTVILLE, ALA.

Football (1, 2, 3, 4); Basketball (1, 2, 3); "H" Club.

(Bottom Row)

CHARLES REESE GLAZE, A.B.  
BIRMINGHAM, ALA.

PAUL E. GWIN, JR., A.B.  
SUMITON, ALA.

Π Κ Φ

Secretary, Junior Class; Treasurer, Sophomore Class; Student Council (4); *Crimson* Staff (2).

RUBY HAGOOD, A.B.  
BIRMINGHAM, ALA.

Β Φ Α

W. A. A. (3); Social Science Club (3).



## SENIOR CLASS

(Top Row)

JOE FLOYD HALL, B.S.  
SWAIM, ALA.

Π Κ Φ

Baseball (1); Track (3, 4); Men's Pan-Hellenic Council.

LEVOYD HALL, B.S.  
SWAIM, ALA.

Π Κ Φ

Baseball (1); Track (3, 4).

FRANCES HANKINS, B.S.  
BIRMINGHAM, ALA.

(Bottom Row)

PETER HORN, B.S.  
NORTH ADAMS, MASS.

MABEL HUDSON, A.B.  
BIRMINGHAM, ALA.

Β Π Θ, Π Κ Θ

Booklover's Club (3, 4); *Crimson Staff*; Y. W. C. A.

ESTHA MAE IRWIN, A.B.  
BIRMINGHAM, ALA.

Judson College (1, 2); B. S. U. Council; President, Mission Band; President, Sophomore Sunday School Class; Y. W. A.; Y. W. C. A.; B. Y. P. U.; W. A. A.; Freshman Cheer Leader; Howard (3, 4); Baptist Student, Secretary; Director Religious Activities; W. A. A.; Y. W. C. A.; Pep Squad; Parade Committee (4); S. S. C.





## SENIOR CLASS

(Top Row)

HAZEL JOHNSON, A.B.  
BIRMINGHAM, ALA.

A Δ Θ

Vice-President, Freshman Commission, Y. W. C. A.; Basketball (1); Honor Roll (2); Piano Orchestra (2, 3); Sponsor, Howard-Chattanooga Game (3); Leader, Beauty Section ENTRE NOUS (3); Junior Stunt; Hypatia (4); Y. W. C. A. Cabinet (4); President, Women's Student Government (4); Student Council (4); B. S. U. Council (4); Booklover's Club (4); Pan-Hellenic Council (4); Band Sponsor, Howard-Union Game (4); Sponsor, Howard-Auburn, Howard-Southwestern, Howard-Southern games (4).

SAM W. JONES, A.B.  
PINE APPLE, ALA.

Π Κ Φ

Basketball (1); Baseball (3, 4).

LAMAR KENNEDY, A.B.  
BRUNDIDGE, ALA.

Θ Κ Ν

President, Student Body (4); Pre-Law Student.

(Bottom Row)

ROY DEAN KENNEDY, A.B.  
BIRMINGHAM, ALA.

Football (1, 2, 3, 4); Track (2, 3); Boxing Team (3, 4); "H" Club.

ELIZABETH KRONENBERG, A.B.  
BROOKSIDE, ALA.

X Δ Φ, Β Π Θ, Π Κ Θ

Crimson Staff (1, 2, 3, 4); Glee Club (2, 3, 4); Treasurer, Chi Delta Phi (3); President (4); Vice-President Beta Pi Theta (4); Secretary (3); Booklover's Club (1, 2, 3, 4); Reporter (3); Secretary (4); Honor Roll (1, 2, 3); Hypatia, Marshal (4); Beauty Parade (4); Candidate for Degree with Honors in English.

WINSTON LEGGE, B.S.  
ATHENS, ALA.

Σ Ν

Athens College (1, 2); Pan-Hellenic Council (4); Parade Committee (4); Honor Roll (4).



## SENIOR CLASS

(Top Row)

JACK LESS, A.B.  
NORTH ADAMS, MASS.

Rensselaer Polytechnic Institute (1, 2); Basketball; Football; *The Poly*; Interfraternity Basketball and Baseball; Howard (3, 4); Y. M. C. A. Basketball (3); Boxing (3, 4); Honor Roll (3).

HERBERT LYKES, B.S.  
BIRMINGHAM, ALA.

Θ K N

Student Council (2).

MAYO MANASCO, B.S.  
TOWNLEY, ALA.

Θ K N

Men's Pan-Hellenic; Baseball (1, 2); Assistant Business Manager *Crimson* (3); Business Manager (4).

(Bottom Row)

MAJEL MANGUN, A.B.  
BIRMINGHAM, ALA.

Δ Z, Π K Θ, Δ K

*Crimson* Staff (1, 2, 3); Society Editor (4); Y. W. C. A. Cabinet (2, 3); W. A. A. Board (1, 2, 3); Reporter (2, 3); Treasurer (4); Basketball (1, 2, 3, 4); Hockey (1, 2); Hockey Conference Alabama College (2); Swimming (1, 2, 3, 4); Tennis (1, 2, 4); Hiking (4); ENTRE NOUS Staff (3); Intercollegiate Debating Council, Secretary (2); Debate Manager and Secretary (3); "The New Co-ed" (1); "The Importance of Being Earnest" (2); Howard Masquers; B. S. U. Council, Reporter (2); Pan-Hellenic Council (3, 4); Stunt Night (2, 3); Social Science Club (4); Parade Committee (4); Good-Will Tour, '33; Pep Squad (4); Hypatia (4); "Outstanding Freshman Girl" Medal.

EVELYN MANKER, A.B.  
EL PASO, TEX.

Α Δ Π

El Paso College of Mines and Metallurgy (1, 2); Election Committee (4); Parade Committee (4); Y. W. C. A. Cabinet (4).

OCTAVIA MARTIN, A.B.  
BIRMINGHAM, ALA.

Δ Z



## SENIOR CLASS

(Top Row) ED MASON, B.S.  
COLUMBUS GROVE, OHIO  
Σ N

Howard Masquers; Y. M. C. A. Cabinet; ENTRE NOUS Staff (3); Boxing Team (3); Glee Club (3); Class Stunt (2, 3); "Dulcy" (3).

STANLEY MATE, A.B.  
BIRMINGHAM, ALA.  
Σ Υ, Π K Θ

Football (2, 3, 4); "H" Club; Class Stunt (2, 3); Business Manager, Freshman Edition *Crimson*; Editor *Crimson* (3); Constitutional Committee (4); Editor Senior Edition *Crimson*; General Stunt Night Committee (4); Assistant Editor ENTRE NOUS (4); Trident Club (4); Treasurer.

MARJORIE MAUNEY, A.B.  
BIRMINGHAM, ALA.  
Δ Z, Β II Θ

Y. W. C. A. Cabinet (1, 2, 3); Devotional Chairman (2); Vice-President (3); Treasurer (4); Allied Arts Club (1, 2, 3, 4); Secretary-Treasurer, Beta Pi Theta (2); Parliamentarian (3); W. A. A. (1, 2, 3); Basketball (1, 2); Baseball (1, 2); Glee Club (1); Honor Roll (1); Business Manager, Sophomore Edition *Crimson*; *Crimson* Staff (1, 2); ENTRE NOUS Staff (3); Parade Committee (3); Howard Masquers (3, 4); "Lady Windermere's Fan" (3); "The Taming of the Shrew" (3); Hypatia (4); Historian; Senior Class Ring Committee; Editor Bullpup (3); Student Council (3, 4); Stunt Committee (3); Gold Honor Award (4); Constitutional Committee (4).

(Bottom Row)

MILDRED MAXWELL, A.B.  
BIRMINGHAM, ALA.

Δ Z

Judson College (1, 2); Y. W. C. A. Cabinet (1); Art Club (1, 2); French Club (1, 2); Y. W. A., Secretary (1); Vice-President (2); Howard (3, 4); Allied Arts Club (3); Y. W. C. A. (3, 4).

DOROTHY MAE MCKINNEY, A.B.  
BIRMINGHAM, ALA.

X Δ Φ

Hypatia (4); Chaplain; Secretary, Chi Delta Phi; Honor Roll; Marshal (3); Publicity Committee W. A. A.; Reporter, Booklover's Club; Candidate for Degree with Honors in English.

JOHN MIGLIONICO, B.S.  
BIRMINGHAM, ALA.

Δ K, Σ T

Math. Medal (1); Delta Kappa (2, 3); Debate Manager (3); Trident Club (3); Secretary; ENTRE NOUS Staff (3); Marshal (1); Head Marshal (2); Honor Roll (1, 2, 3).





## SENIOR CLASS

(Top Row)

SUE NEAL, A.B.  
BIRMINGHAM, ALA.

Α Δ Π

President, College Girl's Sunday School Class; B. S. U. Council; Y. W. C. A. Cabinet; Glee Club.

JESSIE JO NIX, A.B.  
ONEONTA, ALA.

Social Science Club; Booklover's Club; Y. W. C. A.

HARLAN OGLE, A.B.  
BIRMINGHAM, ALA.

(Bottom Row)

ALVAN A. OUTLAND, A.B.  
BIRMINGHAM, ALA.

Π Κ Α

ENTRE NOUS Staff (2, 3, 4); *Crimson* Staff (3, 4); Assistant Editor (4); Y. M. C. A. Cabinet (3); Business Manager Bullpup (3).

DOROTHY VIRGINIA PARKER, A.B.  
MERIDIAN, MISS.

Α Δ Θ

Louisiana Tech. (1, 2); French Club (1, 2); International Relations Club (1, 2); Junior Stunt; Y. W. C. A. (1, 2, 3, 4); Pep Squad (4); Dormitory Wing, President (4).

DIXIE LENORA PATTEN, A.B.  
BIRMINGHAM, ALA.

Β Φ Α, Β Π Θ

Allied Arts Club (1, 2, 3, 4); "The New Co-ed" (1); University of Chattanooga (2); Howard Masquers (3, 4); "Lady Windermere's Fan" (3); "The Taming of the Shrew" (3); Treasurer, Beta Pi Theta (4); Class Stunt (1, 3).



## SENIOR CLASS

*(Top Row)*

MARTIN PURITZ, A.B.  
BROOKLYN, N. Y.

JOHN SELLERS RASCO, A.B.  
BIRMINGHAM, ALA.

Ministerial Association; Men's Glee Club.

LUCILLE RICE, A.B.  
BIRMINGHAM, ALA.

*(Bottom Row)*

DONALD SILBERMAN, A.B.  
BIRMINGHAM, ALA.

JUNE SHARPLES, A.B.  
BIRMINGHAM, ALA.

A Δ Π

Pan-Hellenic Council (3, 4); W. A. A. (2); Tennis Team (2); Glee Club (1); Y. W. C. A. (1, 2, 3, 4); Chorister (2).

HENRY SMITH, B.S.  
ALEXANDER CITY, ALA.

Π Κ Φ

Student Council (2); Y. M. C. A. Cabinet (2); B. S. U. Council (2, 3); Treasurer (3); Football (1); ENTRE NOUS Staff (2); Business Manager, ENTRE NOUS (3); President, Senior Class; Trident Club (4).



## SENIOR CLASS

(Top Row)

**TOM SMITH**  
BIRMINGHAM, ALA.  
II K A

**EDNA STEWART, A.B.**  
BIRMINGHAM, ALA.  
A Δ Θ

Secretary, Freshman Commission, Y. W. C. A.; Glee Club (1, 2, 3, 4); President (4); Allied Arts Club (3, 4); Booklover's Club (3, 4); Treasurer (4); Sophomore Marshal; Head Marshal, Founder's Day (3); Honor Roll (1, 2, 3); Secretary, Women's Student Organization (4); Social Science Club (4).

**KATHERINE UPSHAW, A.B.**  
BIRMINGHAM, ALA.  
B Φ A, Δ K

Allied Arts Club; Booklover's Club; W. A. A.; Y. W. C. A. Cabinet; Parade Committee; Secretary, Women's Pan-Hellenic; ENTRE NOUS Staff; City Pan-Hellenic Scholarship Winner, 1934.

**IRWIN WALDROP, A.B.**  
BIRMINGHAM, ALA.  
Basketball (2, 3); "H" Club.

(Bottom Row)

**ERIN WALLACE, A.B.**  
BIRMINGHAM, ALA.  
A Δ II

University of Alabama (1, 2); Women's Student Council (2); W. A. A. (1, 2); Basketball (1, 2); Baseball (1, 2); Track (1, 2); Y. W. C. A. (1, 2); B. S. U. (1, 2); Howard (3, 4); W. A. A. (3, 4); Vice-President (4); Hockey (3); Baseball (3); Volley Ball (4); Basketball (4); Y. W. C. A. (3, 4).

**E. T. WALROND, B.S.**  
BIRMINGHAM, ALA.  
II K A

Band (1, 2, 3, 4); President, Sophomore Class; Men's Pan-Hellenic Council (2, 3, 4); President (4); Student Council (4); Vice-President, Student Body (3); Basketball (1); Baseball (3, 4); "H" Club.

**IRVING WEINSTEIN, A.B.**  
BROOKLYN, N. Y.  
K Φ K, B II Θ

Trident Club (4); President; President, Kappa Phi Kappa; Allied Arts Club; Dramatic Club; Honor Roll; Parade Committee.

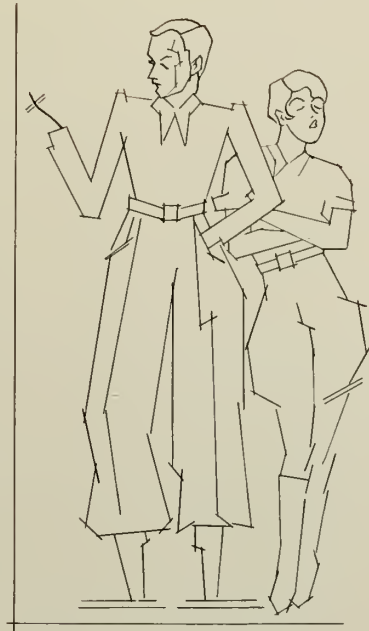
**WILLIAM BARNETT WIGGINS, A.B.**  
MIDLAND CITY, ALA.  
II K A, Σ T, II K Θ

Glee Club (2); Assistant Editor *Crimson* (3); ENTRE NOUS Staff (3); Editor *Crimson* (4).

**ELLOSTEIN WRIGHT, A.B.**  
BIRMINGHAM, ALA.  
X Δ Φ

Basketball (1, 2, 3); Baseball (2); Glee Club (2, 3); *Crimson* Staff (2, 3); W. A. A. (1, 2, 3, 4); Y. W. C. A. (1, 2, 3); Social Science Club Reporter (4); President, Booklover's Club (4); Chi Delta Phi Reporter (4).





# OTHER CLASSES





T H E J U N I O R

# Members

JONAH ANDERSON  
DE FUNIAK SPRINGS, FLORIDA

Football (1, 2, 3).

ELEANOR ARENDALE  
BIRMINGHAM, ALABAMA

ELIZABETH BOBO  
BIRMINGHAM, ALABAMA

B Σ O

MARTHA BRASFIELD  
DORA, ALABAMA

A Δ Π

Y. W. A. (3); Pep Squad (3); Alabama College (1).

DORIS BRIDGES  
BIRMINGHAM, ALABAMA

Φ M, A E Δ

Freshman Commission Y. W. C. A. (1), Cabinet (3); Sponsor, Howard-Southern Game (1), Parade Sponsor (3); Feature Section "Entre Nous" (1, 2); Class Stunt (1, 2); Secretary Alpha Epsilon Delta (3); Howard Masquers (2, 3); "Lady Windemere's Fan" (2), "Taming of the Shrew" (2), "Dulcy" (2), "The Sleeping Princess" (3).

GRETCHEN BROWN  
BIRMINGHAM, ALABAMA

Θ T

VIRGINIA COBB  
BIRMINGHAM, ALABAMA

A Δ Θ, Δ K

Pan-Hellenic (3); Delta Kappa (2, 3); Pre-Law Club (3); Float Sponsor, Howard-Southern Parade (3).

MARGIE CRAIG  
BIRMINGHAM, ALABAMA

B Φ A

ISABELLA DAVIES  
BIRMINGHAM, ALABAMA

B Σ O

Y. W. C. A. (1, 2, 3), Cabinet (3); Secretary Sophomore Class (2); Secretary, Student Body (3); Football Queen (3).

OSCAR A. DAVIS

DOUBLE SPRINGS, ALABAMA

B. Y. P. U. (1, 2), President (1); Ministerial Association (1, 2, 3), Vice-President (2); B. S. U. Council, Third Vice-President (2); Social Science Club.

SAMUEL JAMES DOOLEY

BOAZ, ALABAMA

VIRGINIA EAGLES

BIRMINGHAM, ALABAMA

Δ Z

Second Vice-President Freshman Commission Y. W. C. A. (1); Y. W. C. A. (1, 2, 3), Cabinet (2, 3); W. A. A. (1, 2, 3), Board (2); Basketball (1), Manager Hockey (1), Baseball (2), Volley Ball (3); "Thursday Evening" (1), "Lady Windemere's Fan" (2), "The Torchbearers" (3); Allied Arts Club (1, 2, 3); Howard Masquers (2, 3); "Entre Nous" Staff (3); Stunt (2); General Chairman for Stunts (3); Honor Roll (1); Editor, Junior Edition "Crimson" (3).

THOMAS FORRESTER

BIRMINGHAM, ALABAMA

Π K Λ, Δ K, K Φ K

Cheer Leader (1, 2); "Crimson" Staff (2); President Y. M. C. A. (3); Sophomore Stunt (2); Junior Stunt (3).

COPELAND GRAVES

BLOUNTSVILLE, ALABAMA

Π K Φ

President Sophomore Class (2); Council Member (3); Men's Pan-Hellenic Council (3); Baseball (2).

RUTH GRAVES

BIRMINGHAM, ALABAMA

B Φ A

Girls' Glee Club.

LAWRENCE GREER  
BIRMINGHAM, ALABAMA

Honor Roll (1, 2, 3); Ministerial Association (1, 2, 3), Treasurer (2).





T H E J U N I O R

# Members

EVELYN GRIMMER  
BIRMINGHAM, ALABAMA

Φ M

EVA KATHRYN HARGRAVE  
BIRMINGHAM, ALABAMA

X Δ Φ

Y. W. C. A. Representative to Ridgecrest (3), Cabinet (3); Booklovers' Club, Vice-President (3); Nominee for Feature Section (3); Chi Delta Phi, Treasurer (3); "Lady Windermere's Fan" (2); Stage Committee, "The Taming of the Shrew" (2); Honor Roll (2); Women's Student Organization (2, 3).

ETHEL HOWLE  
BIRMINGHAM, ALABAMA

Δ Z

EVERETT INGRAM  
ASHLAND, ALABAMA

Π K Φ

Honor Roll (1); Band (2, 3); Manager Band (3), Drum Major (3); Assistant Business Manager, "Entre Nous" (3).

EVELYN CALHOUN JOHNSON  
BIRMINGHAM, ALABAMA

B Σ O

Devotional Chairman Y. W. C. A. (2), Y. W. C. A. (1, 2); Secretary, Women's Pan-Hellenic Council (2), Vice-President (3); Y. W. A. (1, 2); Freshman Commission Director (3); Parade Committee (3); Honor Roll (1, 2); Election Committee (2); Manager Minor Sports, W. A. A. (3); Student Council (3); Pep Squad (3).

OLIN KELSO  
BIRMINGHAM, ALABAMA

A Δ T

Football (1, 2, 3).

PRESTON LANGSTON  
BESSEMER, ALABAMA

A Δ T

EUNICE LONG  
HALEYVILLE, ALABAMA

Girls' Glee Club (1, 2, 3), Vice-President (3); Booklovers' Club (2, 3); B. S. U. Council (2, 3), Vice-President (2); B. Y. P. U. Representative (3), Director (3), President (2); Mission Band (2, 3); Reporter (2); Woman's Student Government (3); Y. W. A. (2, 3), Devotional Chairman (3); Honor Roll (1, 2); Social Science Club (2, 3); Historian (3).

ZEB LUCAS  
ASHLAND, ALABAMA

GRACE MANGUN  
BIRMINGHAM, ALABAMA

Δ Z

Secretary-Treasurer Freshman Commission (1); Allied Arts Club (1); W. A. A. (1, 2); Pep Squad (2); Hiking Chairman (2).

TOMMIE MANGUN  
KANSAS CITY, KANSAS

Δ Z, X Δ Φ

BESS McCOMAS  
BIRMINGHAM, ALABAMA

Φ M, X Δ Φ, Π K Θ

Y. W. C. A. President, Freshman Commission (1), Vice-President (3); Honor Roll (1, 2); Business Manager Freshman Edition "Crimson" (1); Most Outstanding Freshman Girl Medal (1), Parade Committee (2, 3); "Entre Nous" Staff (2, 3), Assistant Editor (2), Editor-in-Chief (3); Election Committee (3); Float Sponsor, Howard-Southern Parade (3); General Chairman Beauty Parade (2); Stunt Committee (2).

PHILLIP McCURDY  
BIRMINGHAM, ALABAMA

Σ Φ E

CLARA McEACHERN  
LOUISVILLE, ALABAMA

Φ M, X Δ Σ

Honor Roll (1, 2); Sophomore Marshal (2), Treasurer, Sophomore Class (2); First Vice-President Freshman Commission (1); Women's Athletic Association (2); Basketball (1); Y. W. A. President (2); B. S. U. (2, 3), Secretary (2), Treasurer (3); Secretary Woman's Student Government (2), Vice-President (3); Vice-President Woman's Student Association (3); Pan-Hellenic (2, 3), President (3); "Entre Nous" Staff (3); B. Y. P. U. President (1); Y. W. C. A. Cabinet (1).

JOHN MILFORD  
HUNTSVILLE, ALABAMA

Σ N, A E Δ

President Freshman Class (1); "Most Outstanding Freshman Boy" Medal (1); Y. M. C. A. (2, 3); Junta (3); Pan-Hellenic Council (2), Secretary, Pan-Hellenic (3).

ELOISE MONTGOMERY  
ROEBUCK SPRINGS, ALABAMA

Φ M



T H E J U N I O R



# Members

HAZEL PAWSON  
BIRMINGHAM, ALABAMA  
Δ Z

FRED PHILLIPS  
BIRMINGHAM, ALABAMA

JANE PRATT  
FAIRFIELD, ALABAMA

PARKS REDWINE  
GADSDEN, ALABAMA

Editorial Staff "Entre Nous" (3); General Secretary Young Peoples' Department Ruhama Sunday School (2, 3); Ministerial Association (1, 2, 3), Reporter (1); Pulpit Supply Chairman and Representative to Faculty (2), Supply Committee (3); "Crimson" Staff (1); Vice-President, Birmingham Association B. Y. P. U. (1); B. S. U. (1, 2, 3), Reporter (1), First Vice-President (1, 2), State Vice-President (3).

MARJORIE ROPER  
BIRMINGHAM, ALABAMA  
Φ M

LEONTE SAYE  
BIRMINGHAM, ALABAMA  
Δ Z, X A Σ

Chemistry Laboratory Assistant (1); Chi Alpha Sigma, Secretary-Treasurer (2), President (3); Y. W. C. A. Freshman Commission (1); Allied Arts Club (1, 2); Honor Roll (1, 2).

CLAUDE SMITH  
BIRMINGHAM, ALABAMA  
Δ K

NATHAN SIMS  
GUNTERSVILLE, ALABAMA

EVELYN SUDDUTH  
BIRMINGHAM, ALABAMA  
Φ M, B Π Θ

Howard Masquers (2, 3); Allied Arts Club (1, 2); Booklovers' Club (3); "Taming of the Shrew" (2); Honor Roll (2).

JAMES TURNER  
CROPWELL, ALABAMA  
A A T

DOROTHY WALKER  
BIRMINGHAM, ALABAMA  
Φ M

"The Torchbearers" (3); Treasurer, Freshman Commission (1); Glee Club (1); Honor Roll (1); W. A. A. (1, 2); Parade Committee (2).

REBA WEAR  
COUSHATTA, LOUISIANA  
Φ M

Secretary Junior Class (3); Booklovers' Club (3); Y. W. C. A. (3).

DOROTHY WILHITE  
BIRMINGHAM, ALABAMA

W. A. A. (1, 2, 3), Board (2, 3); College Volley Ball Manager (3); Hockey Team (1, 2); Basketball Team (1, 2); Baseball Team (2, 3); Volley Ball (3); Y. W. C. A. (3).

MRS. GRADY WINSTEAD  
BIRMINGHAM, ALABAMA

W. G. WINSTEAD  
ONEONTA, ALABAMA



# THE SOPHOMORE

# Members

P. M. ACKER  
BIRMINGHAM, ALABAMA

GLADYS ALLDREDGE  
BROOKSVILLE, ALABAMA

A Δ Π

Allied Arts Club (1); Feature Section (1);  
Howard Masquers (1); Dormitory Council (2);  
Pep Squad (2).

ROBERT ALLEN  
BIRMINGHAM, ALABAMA

Π K Φ

EVELYN ANSLEY  
BIRMINGHAM, ALABAMA

Φ M, Δ K, B Π Θ

Student Council (1); Honor Roll (1); Chair-  
man Freshman Stunt Committee (1); Howard  
Masquers (1, 2), Vice-President (2); Allied Arts  
Club (1); "Taming of the Shrew" (1), "The  
Torchbearers" (2), "La Lettre Chargee" (2);  
Secretary, Delta Kappa (2); Pep Squad (2);  
Y. W. C. A. Cabinet (2).

HOWELL BENNET  
DOTHAN, ALABAMA

Π K Φ

TRACY BURGER  
GADSDEN, ALABAMA  
Football (1, 2).

ANN ELIZABETH BERRY  
BIRMINGHAM, ALABAMA

Δ K

Secretary Freshman Class (1); B. S. U. Coun-  
cil (1); W. A. A. (1); Allied Arts Club (1);  
Baseball (1); Basketball (1); Honor Roll (1);  
Stunt Committee (1); Glee Club (1, 2), Secre-  
tary (2); Student Council (2); Pep Squad (2);  
Vice-President, Delta Kappa (2); Birmingham-  
Southern-Howard Parade Committee (2).

MARVIN BISHOP  
BIRMINGHAM, ALABAMA

Π K Α

OTHO BRUCE  
BIRMINGHAM, ALABAMA

Σ N, Δ K

Y. M. C. A. Cabinet (1, 2).

GRETA B. BURROUGHS  
BIRMINGHAM, ALABAMA

A Δ Θ

Booklovers' Club (1, 2); Pianist Freshman  
Commission, Y. W. C. A. (1).

THOMAS CLINKSCALES  
VINCENT, ALABAMA

WILMA COLLINS  
BIRMINGHAM, ALABAMA

Φ M, A E Δ

Freshman Stunt (1); "Entre Nous" Staff (2).

ALLEN COOK  
ANDALUSIA, ALABAMA

PAUL COX  
CLANTON, ALABAMA

Π K Φ

JESILYN DAVIS  
BIRMINGHAM, ALABAMA

W. A. A. (1, 2).

PAUL DAVIS  
CHEROKEE, ALABAMA

A Δ T

Football.

MARJORIE DERBY  
BIRMINGHAM, ALABAMA

Φ M

EDWARD DUNCAN  
IRONDALE, ALABAMA

Track (1, 2).

JAMES EDWARDS  
MOBILE, ALABAMA

Π K Φ

JOHN FENN  
BIRMINGHAM, ALABAMA

Θ K N

THOMAS GARNER  
BIRMINGHAM, ALABAMA

Π K Α

MARGARET GODWIN  
BIRMINGHAM, ALABAMA

Δ Z, B Π Θ

Glee Club (1); Howard Masquers (1); Allied  
Arts Club (1, 2).





# THE SOPHOMORE

# Members

MILDRED GODWIN  
BIRMINGHAM, ALABAMA

Δ Z, Β Π Θ

Glee Club (1); Howard Masquers (1); Allied Arts Club (1, 2).

CHARLES GRANADE  
LEROY, ALABAMA

KATIE LOU HAMMETT  
BIRMINGHAM, ALABAMA

Φ Μ

Booklovers' Club (1); Feature Section (1); Glee Club (1); Band Sponsor Howard-Auburn Game (2); Band Sponsor Howard-Southern Game (2); Beauty Parade (2); Stunt (1).

FRANCES HILL  
BIRMINGHAM, ALABAMA  
Booklovers' Club (2).

MARGARET HOGAN  
BIRMINGHAM, ALABAMA

Φ Μ, Χ Δ Φ

Honor Roll (1); Band Sponsor Howard-Southern Game (1); Glee Club (1).

THOMAS HOLMES  
ATMORE, ALABAMA  
Football (1).

HAZEL HURTT  
IRONDALE, ALABAMA

Β Π Θ

Honor Roll (1); Booklovers' Club (1, 2).

MELVIN HYATT  
CULLMAN, ALABAMA  
Business Manager, Boys' Glee Club.

WALTER HARPER  
BIRMINGHAM, ALABAMA

Π Κ Α, Χ Δ Σ

HERMAN INGRAM  
SYLACAUGA, ALABAMA

ARTHUR INMAN  
TOWNLEY, ALABAMA

KELLEY JOHNSON  
SYLACAUGA, ALABAMA

STELLA JONES  
BIRMINGHAM, ALABAMA

Δ Z

Birmingham-Southern (1); Paint and Patches Club (1); W. A. A. (2).

J. B. KING  
BIRMINGHAM, ALABAMA

Σ Ν

Treasurer, Freshman Class (1); Allied Arts Club (1, 2); Glee Club (1, 2); Y. M. C. A. Cabinet (1, 2); "Entre Nous" Staff (2).

HELEN MALONE  
BIRMINGHAM, ALABAMA

Δ Z

"Lady Windermere's Fan" (1); Howard Masquers (1, 2); W. A. A. (2); Volley Ball (2).

HARDEE MARTIN  
BIRMINGHAM, ALABAMA

Α Δ Π, Α Ε Δ

ELIZABETH McNEIL  
BIRMINGHAM, ALABAMA

Φ Μ, Χ Δ Φ

MARTHA MILES  
BIRMINGHAM, ALABAMA

Φ Μ

ROLAND MOLPUS  
MOBILE, ALABAMA

Θ Κ Ν

FREDDY MORRIS  
BROWNSVILLE, TENNESSEE  
Θ Κ Ν

ROY MYRICK  
COFFEEVILLE, ALABAMA

Θ Κ Ν

VELMA NEAL  
BIRMINGHAM, ALABAMA

Α Δ Π

Sponsor, Howard-Chattanooga Game (1), Auburn-Howard Game (2); Pep Squad (2); Howard-Southern Parade Committee (2); Float Sponsor, Howard-Southern Parade (2).



# THE SOPHOMORE



# Members

HENRY PARKER

CRICHTON, ALABAMA

Π K Φ, K Φ K, Δ K

President Freshman Class (1, 2); Cheer Leader (1, 2); Allied Arts (1, 2); Y. M. C. A. (1, 2); "Birmingham News" Scholarship; Masquers (1, 2); Student Council (2).

NASH REEDER

BESSEMER, ALABAMA

Σ Φ E

JULIA REEVES

ANNISTON, ALABAMA

Δ K

Allied Arts Club (1); Glee Club (1, 2).

A. M. REID

BIRMINGHAM, ALABAMA

Π K A

FRENCH RHODES

DE ARMANVILLE, ALABAMA

Glee Club.

MILDRED RHODES

BIRMINGHAM, ALABAMA

A Δ Θ

JACK ROBERTSON

BIRMINGHAM, ALABAMA

Σ N

MADRENE ROTHERMEL

BIRMINGHAM, ALABAMA

A Δ Π

Feature Section (1); Beauty Parade (2).

FRANK SLAUGHTER

BIRMINGHAM, ALABAMA

Π K A

Football.

MARJORIE SMITH

BIRMINGHAM, ALABAMA

A Δ Π

VARINA SHELTON SMITH

BIRMINGHAM, ALABAMA

Δ K, B Π Θ

Allied Arts Club (1); Howard Masquers (2); Y. W. C. A. Cabinet (2).

CARMEL SNOW

HELENA, ALABAMA

MARY LENA TAYLOR

BIRMINGHAM, ALABAMA

Δ Z

ELIZABETH TILLER

BIRMINGHAM, ALABAMA

Φ M

Honor Roll (1, 2); Freshman Marshal (1); Booklovers' Club (1, 2).

ELIZABETH WEAKLEY

ROEBUCK SPRINGS, ALABAMA

A Δ Η

BEN WILBANKS

TALLASSEE, ALABAMA

A Δ T

President Sophomore Class (2); Football.

MILDRED WILKINSON

BIRMINGHAM, ALABAMA

B Φ A

Vice-President Freshman Commission (1); A. D. Smith Math Award (1); Freshman Stunt (1); Y. W. C. A. Cabinet (1, 2), Secretary (2); "Entre Nous" Staff (1, 2); Honor Roll (1, 2); Booklovers' Club (1, 2); Glee Club (1, 2); Arts Club (1, 2); Pan-Hellenic Council (2); Beauty Parade (2); Float Sponsor. Howard-Southern Parade (2).

LAEVERT WILLIAMS

MONTGOMERY, ALABAMA

Π K Φ

CAROLYN WILLIS

BIRMINGHAM, ALABAMA

B Φ A

Booklovers' Club (1, 2).

MARIA WOODS

BIRMINGHAM, ALABAMA

W. A. A. (1, 2).

LULA WRIGHT

BIRMINGHAM, ALABAMA

B Σ O

Birmingham-Southern (1); W. A. A. (2).

LAVINIA YOUNG

FAIRFIELD, ALABAMA

A Δ Π

Alabama College (1); Freshman Commission (1); Home Economics Club (1).



# THE FRESHMAN

# Members

ARCHIE ADAMS . . . . .	Leeds, Alabama
GRACIE ADAMS . . . . .	Leeds, Alabama
MARY ELLEN ADKINS . . . . .	Milltown, Alabama
PAUL ALLEN, <i>Π K Φ</i> . . . . .	Birmingham, Alabama
RUTH ALLRED . . . . .	Birmingham, Alabama
GRACE ANDERSON, <i>A Δ Π</i> . . . . .	Thomasville, Alabama
MOLLY ANDERTON, <i>A Δ Π</i> . . . . .	Birmingham, Alabama
FAY ASKEW, <i>Π K Φ</i> . . . . .	Dothan, Alabama
LUPTON BAINES, <i>Π K Φ</i> . . . . .	Blountsville, Alabama
GILES BAKER, <i>A Δ T</i> . . . . .	Birmingham, Alabama
VIRGINIA BARNES . . . . .	Birmingham, Alabama
MARTHA JO BASS, <i>A Δ Π</i> . . . . .	Birmingham, Alabama
TRUMAN BASS, <i>Θ K N</i> . . . . .	Birmingham, Alabama
CHARLES BELL, <i>Θ K N</i> . . . . .	Townley, Alabama
JACK BELL, <i>Π K Φ</i> . . . . .	Dothan, Alabama
BERNICE BELLSNYDER, <i>Δ Z</i> . . . . .	Birmingham, Alabama
LUCILLE BLACK, <i>B Σ O</i> . . . . .	Birmingham, Alabama
MARTHA JULE BLACKSHEAR, <i>Φ M</i> . . . . .	Headland, Alabama
LEO BRAZIL, <i>Θ K N</i> . . . . .	Millport, Alabama
EARL BROWN . . . . .	Birmingham, Alabama
HERBERT BROWNE, <i>A Δ T</i> . . . . .	Birmingham, Alabama
ERNEST BUCHI . . . . .	Birmingham, Alabama
JARRELL BURDETT . . . . .	Clanton, Alabama
JEAN CAMPBELL . . . . .	Birmingham, Alabama
HAROLD CARTER, <i>Π K A</i> . . . . .	Selma, Alabama
WILLIAM CHANDLER, <i>Π K Φ</i> . . . . .	Birmingham, Alabama
OLLIE COBB, <i>Π K Φ</i> . . . . .	Jasper, Alabama
DOROTHY COLE, <i>Δ Z</i> . . . . .	Decatur, Alabama
JUDSON COLLEY, <i>Σ N</i> . . . . .	Troy, Alabama
AUDIE LOU COMPTON . . . . .	Hanceville, Alabama
NORMAN COOPER . . . . .	Rogersville, Alabama
ROSEMARY CROOK, <i>A Δ Θ</i> . . . . .	Birmingham, Alabama
FRANCES CROWDER . . . . .	Birmingham, Alabama
REBECCA DAILY, <i>Δ Z</i> . . . . .	Birmingham, Alabama
ELOISE DENTON, <i>A Δ Θ</i> . . . . .	Talladega, Alabama
MARY ELIZABETH ESTES, <i>A Δ Π</i> . . . . .	Birmingham, Alabama





# THE FRESHMAN

# Members

VERNON FAULKNER, $\Sigma \Phi E$ . . . . .	Birmingham, Alabama
BILLIE HUGH FENNELL, $\Theta K N$ . . . . .	Birmingham, Alabama
SARA FERRELL, $\Delta Z$ . . . . .	Birmingham, Alabama
GRACE FULLER, $A \Delta \Pi$ . . . . .	Perryville, Alabama
JULIET FULLER, $A \Delta \Pi$ . . . . .	Perryville, Alabama
LESLIE FUQUA, $\Theta K N$ . . . . .	Birmingham, Alabama
MRS. C. R. GLAZE . . . . .	Birmingham, Alabama
ELIZABETH GOURLEY, $A \Delta \Pi$ . . . . .	Birmingham, Alabama
EARL GRIFFIN, $\Pi K A$ . . . . .	Birmingham, Alabama
WINIFRED GRISSOM, $\Pi K A$ . . . . .	Birmingham, Alabama
JOHN HANKINS, $\Sigma \Phi E$ . . . . .	Birmingham, Alabama
JOHN HARRELL, $\Sigma N$ . . . . .	Thomaston, Alabama
MARGARET HARRIS, $A \Delta \Pi$ . . . . .	Birmingham, Alabama
CHARLES HEALY, $\Sigma \Phi E$ . . . . .	Birmingham, Alabama
GLENN HEARN, $\Pi K \Phi$ . . . . .	Albertville, Alabama
MARY NELL HEARN, $A \Delta \Pi$ . . . . .	Albertville, Alabama
ODELL HESTER . . . . .	Russelville, Alabama
MARY NELL HILL, $A \Delta \Pi$ . . . . .	Birmingham, Alabama
JOHN HINGSON . . . . .	Oneonta, Alabama
MARTHA HUGGINS, $\Phi M$ . . . . .	Birmingham, Alabama
KATHERINE HUTCHINSON, $A \Delta \Pi$ . . . . .	Troy, Alabama
ROBERT JAMES, $\Pi K \Phi$ . . . . .	Birmingham, Alabama
LETTIE LOU JOHNSON . . . . .	Birmingham, Alabama
ERNESTINE JONES, $A \Delta \Pi$ . . . . .	Birmingham, Alabama
J. E. LEE . . . . .	Decatur, Alabama
JOSEPHINE LENZ, $\Phi M$ . . . . .	Birmingham, Alabama
LONNIE DEE LINDSEY, $\Pi K A$ . . . . .	Alachua, Florida
JEAN LOYD, $A \Delta \Pi$ . . . . .	Birmingham, Alabama
BERNARD MACHIN, $\Pi K \Phi$ . . . . .	Albertville, Alabama
HUBERT MATE . . . . .	Birmingham, Alabama
MARY McCARTY, $A \Delta \Pi$ . . . . .	Dothan, Alabama
ALEX McCUTCHEON, $\Pi K \Phi$ . . . . .	Birmingham, Alabama
WILMA McDONALD, $\Delta Z$ . . . . .	Birmingham, Alabama
MAMIE MIDDLETON, $A \Delta \Pi$ . . . . .	Homewood, Alabama
MARY LOU MILLER, $B \Sigma O$ . . . . .	Irondale, Alabama



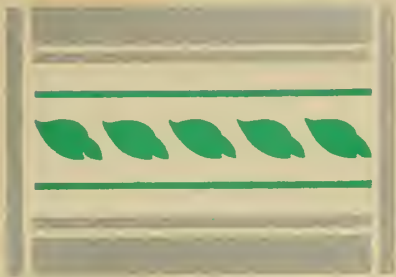
# THE FRESHMAN



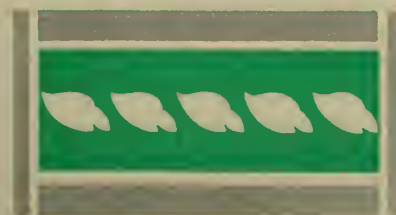
# Members

EMILY MITCHELL, <i>B Σ O</i> . . . . .	Birmingham, Alabama
ROBERT O'DANIEL . . . . .	Tallassee, Alabama
ELMA OGLE . . . . .	Birmingham, Alabama
ETHELYN ORR, <i>A Δ Θ</i> . . . . .	Birmingham, Alabama
SHIRLEY PATRICK, <i>Φ M</i> . . . . .	Fairfield, Alabama
GERALDINE PATTERSON, <i>Φ M</i> . . . . .	Gadsden, Alabama
RUTH PATTERSON, <i>A Δ Π</i> . . . . .	Birmingham, Alabama
CALVIN PETTEY, <i>Π K Φ</i> . . . . .	Decatur, Alabama
ALIECE PHILLIPS . . . . .	Birmingham, Alabama
ROBERT PHILLIPS . . . . .	Birmingham, Alabama
ELEANOR POWELL . . . . .	Birmingham, Alabama
LOUISE POWELL, <i>Φ M</i> . . . . .	Birmingham, Alabama
JOEL RAINER, <i>A Δ T</i> . . . . .	Verbena, Alabama
LIBBY JEAN REEVES, <i>A Δ Θ</i> . . . . .	Birmingham, Alabama
CAROL JEANETTE ROGERS, <i>A Δ Θ</i> . . . . .	Morris, Alabama
MELL SCARBOROUGH, <i>A Δ Π</i> . . . . .	Albertville, Alabama
L. C. SIMS, <i>Σ N</i> . . . . .	Thorsby, Alabama
HUGH FRANK SMITH . . . . .	Munford, Alabama
LOUISE SMITH, <i>A Δ Θ</i> . . . . .	Birmingham, Alabama
VIRGINIA SPEER . . . . .	Decatur, Alabama
MARGARET STAUNTON, <i>Φ M</i> . . . . .	Birmingham, Alabama
NELLE STEWART, <i>A Δ Θ</i> . . . . .	Birmingham, Alabama
ED STRICKLAND . . . . .	Albertville, Alabama
MARY VIRGINIA TURNER, <i>A Δ Θ</i> . . . . .	Cropwell, Alabama
BUELL WARREN, <i>A Δ T</i> . . . . .	Rogersville, Alabama
HOWARD WEAVER . . . . .	Decatur, Alabama
ELIZABETH WHATLEY, <i>B Σ O</i> . . . . .	Birmingham, Alabama
JANE WHEELER, <i>Φ M</i> . . . . .	Birmingham, Alabama
LEE WHITE . . . . .	Birmingham, Alabama
MARY LOUISE WHITE, <i>Φ M</i> . . . . .	Birmingham, Alabama
NAUFLEET WILLIAMSON . . . . .	Birmingham, Alabama
MARY WATTIE WILSON, <i>Φ M</i> . . . . .	Birmingham, Alabama
RAYMOND WRIGHT, <i>Θ K N</i> . . . . .	Guin, Alabama
VIRGINIA WRIGHT, <i>A Δ Θ</i> . . . . .	Guin, Alabama
MARY YANDLE, <i>B Φ A</i> . . . . .	Birmingham, Alabama





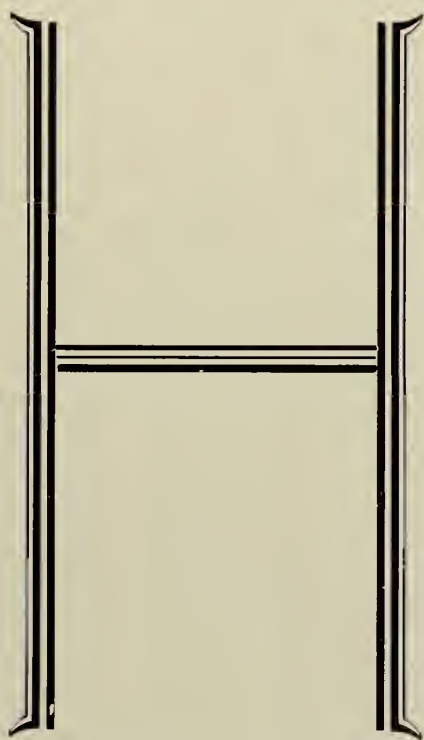
A T H L E T I C S







# WEARERS OF THE



VICTOR RANDOLPH  
STANLEY MATE  
ROY FAYET  
RUSSELL GARRETT  
E. T. WALROND  
SAM JONES  
DAN SNELL  
JIM STUART  
DEWITT DUNN  
ADRIAN MCKENZIE

JACK OSBORNE  
OLIN KELSO  
PAT HARRISON  
SWEDE LAWSON  
PAT MADONIA  
PRESTON LANGSTON  
CHET SPATH  
MIKE WELLS  
JONAH ANDERSON  
RAY HOLMSTEDT  
PETE ALLEN  
HICK EWING  
ROY KENNEDY  
TOM EVERETTS  
EWING HARBIN  
LAMAR WILLIAMS  
BOB THOMPSON  
PETE ESTES  
HORACE GUTTERY  
CHET MACOMBER  
PENNY PENROD  
DAVE SNELL  
DAVE KILPATRICK  
DEWEY FINLEY  
MUREL SCHRECKENGOST  
EDWARD CHOJNOWSKI  
CHARLIE WILCOX  
RED BATSON  
EDDIE WOJECKI  
BILL HEARD  
MORRIS PICKENS





## THE SEASON'S GAMES ~

### HOWARD, 31; JACKSONVILLE, 0

Opening up the season against Jacksonville State Normal, the Bulldogs were able to win an impressive victory. They defeated the Owls, 31-0, using the entire squad in the game. The team clicked perfectly, and when the reserves were sent in the team was not weakened.

### HOWARD, 0; AUBURN, 19

Howard played a vicious defensive game against the Tigers, losing 19-0. Auburn's first touchdown came as the result of a fumble and a stiff penalty. The other two scores were a 52-yard sprint and a long forward pass. The Bulldogs had one scoring chance late in the game; a brilliant forward pass to Estes good for 33 yards placed

the ball on Auburn's eight-yard line, but the Auburn defense tightened as the game ended.

### HOWARD, 13; PRESBYTERIAN, 0

The Bulldogs beat the Presbyterian Blue Hosemen 13-0 with two perfectly timed forward passes when they got their chances in the second and fourth periods of play. Kennedy, Garrett, Everetts and Ewing were responsible for these. There was little marching, with each team making only three first downs. Harrison was the outstanding lineman.

### HOWARD, 51; UNION, 0

The Bulldogs scored from one to three touchdowns in each period. The backfield men were running hard and the linemen doing their part. The invaders were able to make only one first down, this coming in the fourth quarter, while Howard scattered her 26 first downs rather freely.



**HOWARD, 26; SOUTHWESTERN, 7**

Howard ran true to predictions in winning easily from Southwestern, and was never in danger from the first whistle. Dashing out into the front the Bulldogs piled up a commanding lead. It was in the final period that the Lynx scored, using a cleverly executed passing attack. The Bulldogs scored in every quarter, limiting the Lynx to 24 net yards on running plays from scrimmage. The first downs stood 13 for Howard and 8 for Southwestern.

**HOWARD, 27; MILLSAPS, 7**

After taking a 19-0 licking from the Majors last year, the Bulldogs won an easy victory over Millsaps, 27-7. The Millsaps score came as a result of a number of short passes. It was demonstrated to the coaches in this game that the Bulldogs were out to win a title. The vicious brand of football displayed at times by the Majors made the game very interesting. The Bulldog line was functioning perfectly, making large holes for the backfield men to run through.

**HOWARD, 50; SPRING HILL, 0**

The Bulldogs were held scoreless the first quarter. Coach McLane sent in a new team and before

the game ended had 50 points. Different combinations were used in this game and all functioned as a unit. Before this year the series with the Hillians had been very close but due to our excellent team this year, they were smothered under.

**HOWARD, 21; MISSISSIPPI, 0**

This game was the crisis of the Howard football season. By winning it the Bulldogs were able to claim S. I. A. A. and Dixie Conference titles. Ewing Harbin and Everetts led the Bulldog attack, with the line performing perfectly. Harbin's 90-yard run for Howard's first score was the most spectacular play of the day. The blocking of Penrod and Ewing was another outstanding feature of the game, making possible the long runs.

**HOWARD, 6; TAMPA, 6**

Facing a powerful and a heavier team in Tampa the Bulldogs were tied, 6-6. Tampa being outplayed put up a good defense, especially during the last half. Howard's only touchdown came in the second quarter when Everetts ran 35 yards behind perfect interference for a counter.

*Varsity*

**FOOTBALL**

**SCHEDULE FOR 1933**

Sept. 22—Jacksonville . . . . .	Legion Field
Sept. 29—Auburn . . . . .	Legion Field
Oct. 7—Presbyterian . . . . .	Clinton, S. C.
Oct. 13—Union . . . . .	Legion Field
Oct. 21—Southwestern . . . . .	Legion Field
Oct. 28—Millsaps . . . . .	Legion Field
Nov. 11—Spring Hill . . . . .	Legion Field
Nov. 18—Mississippi College . . . . .	Vicksburg, Miss.
Nov. 30—Birmingham-Southern . . . . .	Legion Field
Dec. 9—Tampa University . . . . .	Tampa, Fla.



# That SOUTHERN GAME

Howard, 7; Southern, 7.

Seldom has there been a more spectacular game seen than the Howard-Southern game. On the first play after Howard got the ball, Pete Estes ran 80 yards off tackle for a touchdown. The Bulldogs were able to get deep into Southern territory twice thereafter, but to no avail. Birmingham-Southern four times forced its way within the Howard 20 yard line, but only once did they make good against the Bulldogs' great defensive play. Ernest Teel proved

to be a constant worry to the Bulldogs. Everetts and Estes were almost "loose" several times but were caught. Most of Howard's offensive was centered around these two, and both proved to be great ball carriers. Both of the Snells did some fine punting. Capt. Fayet, at end, and Wells, at guard, performed excellently for Howard.

Although Birmingham - Southern made more first downs than did Howard, the

yards gained were about even. This undoubtedly was Howard's toughest foe, other than Auburn, of the year.

Two clever plays, one borrowed from Oregon and the other from Coach Thomas of the University of Alabama, were used in this game. Although they were not entirely successful, they added much interest for the spectator. The first was a corkscrew, in which Everetts attempted a gain through center. The second was a try at blocking the opponents' kick for extra point. When the ball was snapped, Anderson, center, was raised to the shoulders of Wells and Spath, guards. This feat was beautifully executed, but fate carried the ball a little too high.

The Southern game closed out the con-

ference football careers of Fayet, Ewing, Wells, Garrett, Lawson, Mate, Kennedy and Dunn. The loss of these men will be a serious one.

As the result of their consistently fine playing throughout the season, "Pooch" Fayet, Tom Everetts, and Chet Spath were chosen for the Dixie Conference and S. I. A. A. teams of the year.

The battle with the Panthers was the last in which Coach McLane saw his beautifully trained team of '33 perform, and was probably the last Howard-Southern fray he will ever witness as coach of the Bulldogs. The 1933 team was one of the finest ever to represent Howard, and was indeed a credit to Coach McLane in the final season of his very successful career at Howard.







COACH McLANE

## *The* COACHING STAFF

Coach Eddie McLane, in his seven years at Howard, has established an enviable record as a coach. His teams have always been a threat in the S. I. A. A. and in the two-year Dixie Conference. He has come to be recognized as one of the best college coaches in the South. McLane teams have made very creditable showings against the Southern and Southeastern Conference rivals also. He has become known too, for his ingenuity in devising plays from the Notre Dame system which Howard football teams use.

Coach Raymond Davis, who this year finished his first year as assistant to Mc-

Lane, has already established himself as an invaluable line coach. Coach "Ray" will be remembered as one of the greatest linemen ever to play at Howard and he has the rare ability to transfer his knowledge to his men. Athletes, and coaches as well, have great respect for his ability as a player and a coach.

Coach Billy Bancroft, probably the greatest Howard back of all time, coaches freshman athletics. He has coached the first year men in great fashion and much of the success of the varsity teams has been due to the thorough basic training they have received from this fine coach.



McLANE

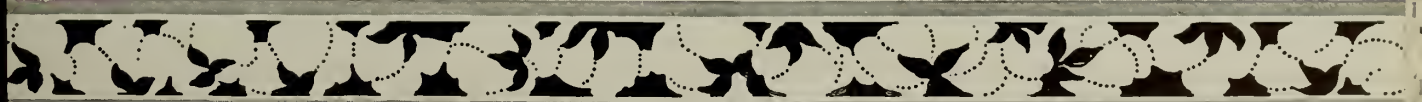
BANCROFT

# AND *the* VARSITY SQUAD

*Front row:* WILBANKS, EVERETTS, MADONIA, GUTTERY,  
J. THOMPSON, N. GARRETT, ESTES, CAP. FAYET,  
PENROD, ALLEN, B. THOMPSON, L. DAVIS, PHILLIPS.

*Second row:* RUSSELL MOLPUS, CLICKAS, EWING,  
P. DAVIS, MCKENZIE, DUNN, MATE, KENNEDY,  
HARBIN, ALT.-CAP. WELLS, GLENN, LANGSTON,  
BURGER, LAWSON.

*Third row:* ROLAND MOLPUS, OSBORNE, SPATH,  
HOLMSTEDT, DAN SNELL, STUART, MACOMBER,  
DAVE SNELL, JOHNSON, ANDERSON, SLAUGHTER,  
KELSO, R. GARRETT, PAT HARRISON, WOJECKI,  
trainer.



# The SENIOR PLAYERS

## PETE ESTES, *Halfback*

Pete will always be remembered at Howard. His run against Southern was not a flash but a sample of his usual brilliance.

## SWEDE LAWSON, *Guard*

Swede, in his four years on the squad, showed great versatility. He is a powerfully built man, and will be greatly missed next year.

## ROY KENNEDY, *Quarterback*

Kennedy's playing has been of the unforgettable sort since 1931, when he made his beautiful pass to "Bottle" Clark in the Duquesne game.

## STANLEY MATE, *Fullback*

After two years at guard, Mate was changed to fullback, where he was a smooth, powerful player his last year.

## ROY FAYET, *End*

"Pooch" made a mighty fine captain in a great year, and then made the All-S. I. A. A. and the All-D. C. picks.

## HICK EWING, *Quarterback*

As a fullback in his first two varsity years, and as a quarterback this year, Hick played a heady, powerful game.

## JOE MIKE WELLS, *Guard*

Mike has played four years of consistently good football at guard. As Alternate-Captain this year he even surpassed his fine performance in previous play.

## RUSSELL GARRETT, *End*

The fourth of the Garretts from Albertville played four years of fine football at end. "Russ" and "Pooch" made a keen starting combination at the flanks.

## DEWITT DUNN, *Tackle*

After several shifts earlier in his football career, Dunn found himself and had a good year at tackle.





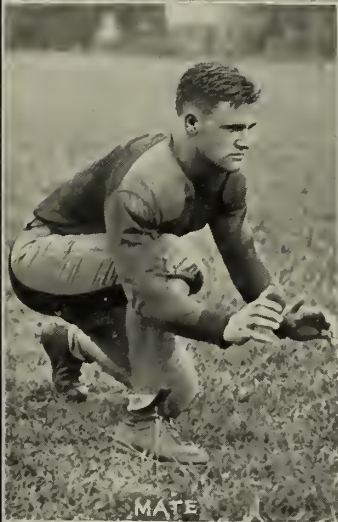
ESTES



EWING



FAYET



MATE



DUNN



GARRETT



LAWSON



KENNEDY



WELLS





## *The* FRESHMAN FOOTBALL TEAM

W. R. BATSON  
MORRIS BORLAND  
I. D. BRITT  
HERBERT BROWNE  
JARRELL BURDETTE  
HENRY LEE BURGETT  
JAMES CATON  
EDWARD CHOJNOWSKI  
JUDSON COLLEY

NORMAN COOPER  
ED EUBANKS  
DEWEY FINLEY  
WILLIAM HEARD  
GLENN HEARN  
JACK LLOYD  
BERNARD MACHIN  
HUBERT MATE  
FRITZ SHULTZ

EDMOND STRICKLAND  
FORREST TRICE  
WILSON WAITS  
BUELL WARREN  
CHARLES WILCOX  
RAYMOND WRIGHT  
REX WRIGHT  
PERCY YEARGEN





## A R E V I E W O F T H E S E A S O N

After starting a slow season, losing to Western Kentucky, Murray Teachers, and Union, the Howard Bulldogs reached their peak during the Howard-Southern series, at the close of the season. The Bulldogs managed to eke out two victories by a lone point margin, only to lose out in the fifth and deciding game. The squad was led by Captain Stuart, the only junior on the team, Kilpatrick, Spath, Schreck, Heard and Finley, all sophomores, made letters.

The Freshman Squad moved through the 1934 season in hurricane fashion to sweep aside all opponents, including the

varsity, with the exception of Susan Moore High School, who defeated them in an overtime game. The team this year, led by Captain Chojnowski, was without a doubt the greatest first year team ever to represent Howard on the hardwood.

At the close of the season, in a heated battle, the freshmen defeated the varsity, 36 to 23. As the result of splendid playing, Captain Chojnowski, Norman Cooper, Wilson Waits, Morris Pickens, Percy Yeagen, W. R. Batson and Preston Puckett were chosen freshmen lettermen.





# Women's ATHLETIC ASSOCIATION

## OFFICERS

ETHEL HOWLE . . . . . *President*  
ERIN WALLACE . . . . . *Vice-President*  
MILDRED BROOK . . . . . *Secretary*  
MAJEL MANGUN . . . . . *Treasurer*

VIRGINIA SPEER  
MADRENE ROTHERMEL  
NAUFLEET WILLIAMSON

JANE PRATT  
DOROTHY WILHITE  
MARTHA JULE BLACKSHEAR





# WOMEN'S *A*THLETICS

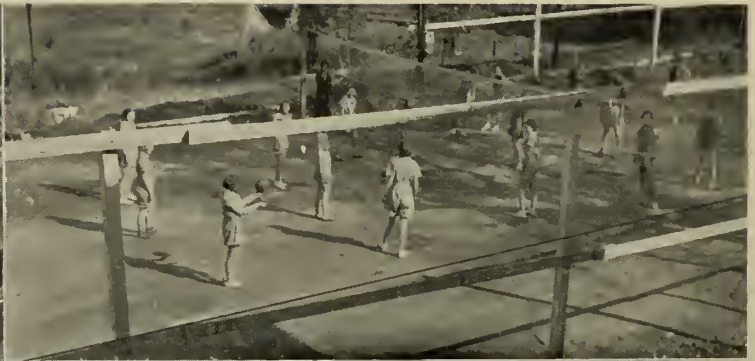
In the Fall of 1930 the Women's Athletic Association was founded at Howard College. Its purpose is fourfold: to promote the health and recreation of the women of the college; to encourage leadership, service, and scholarship; to cooperate with other campus organizations; to further the highest type of college spirit.

The organization has more than justified its existence. It has done a great deal to make of women's athletics an important, living part of the co-ed's campus life. More than thirty girls have the honor of claiming membership in this group.





# When the





# GENTLER SEX RELAX ~

If "variety is the spice of life," then the life of a W. A. A. girl should be as spicy as the air which fills a baker's shop, for nothing could be more varied than the assortment of sports she has to choose from.

A W. A. A. girl may "major" in baseball, basketball, or hockey, or she may prefer to "minor" in ping pong, shuffleboard, badminton, or archery. Walking, when done by W. A. A. lassies, becomes "hikin3," for they scorn a stroll of less than three miles.

When Howard lassies relax, they do it in a straightforward and sensible way. They learn to "play ball," they "hit the bull's eye," and they wouldn't think of *walking* a chalk line when they could run.

Every W. A. A. girl must practice, even though she be perfect, for practice makes for conscientiousness, and conscientiousness, in this case is indeed rewarded, for at the end of every season, the participants in each sport are rewarded with a party which is staged in the whole-hearted W. A. A. way.

### *The members of W. A. A. are:*

GRACE ADAMS, MARY ELLEN ADKINS,  
EVELYN ATCHISON, ANN BERRY, MADA  
BERRY, MARTHA JULE BLACKSHEAR, MIL-  
DRED BROOK, GRETCHEN BROWN, JULIA  
BROWN, GLENDOLYN COLE, DOROTHY  
CASON, CATHERINE COVINGTON, JESELYN  
DAVIS, LOUISE DETAMORE, RACHEL DORF-  
MAN, VIRGINIA EAGLES, ARSELLA FOSTER,  
MARY GRAVES, RUTH GRAVES, RUBY  
HAGOOD, FRANCES HANKINS, MARGARET  
HARRIS, CLAUDIA HUSTON, ETHEL HOWLE,

STELLA JONES, KATHERINE LIVINGSTON,  
HELEN MALONE, GRACE MANGUN, MAJEL  
MANGUN, DOROTHY MCKINNEY, GWEN-  
DOLYN MELTON, BARBARA MOOSE, FAYE  
NEW, HAZEL PAWSON, LOUISE POWELL,  
JANE PRATT, MADRENE ROTHERMEL, VIR-  
GINIA SPEER, MARY LENA TAYLOR, ERIN  
WALLACE, JULIET WEEKS, DOROTHY WIL-  
HITE, MILDRED WILKINSON, NAUFLEET  
WILLIAMSON, MARY WATTIE WILSON, EL-  
LOSTEIN WRIGHT, LULA WRIGHT.



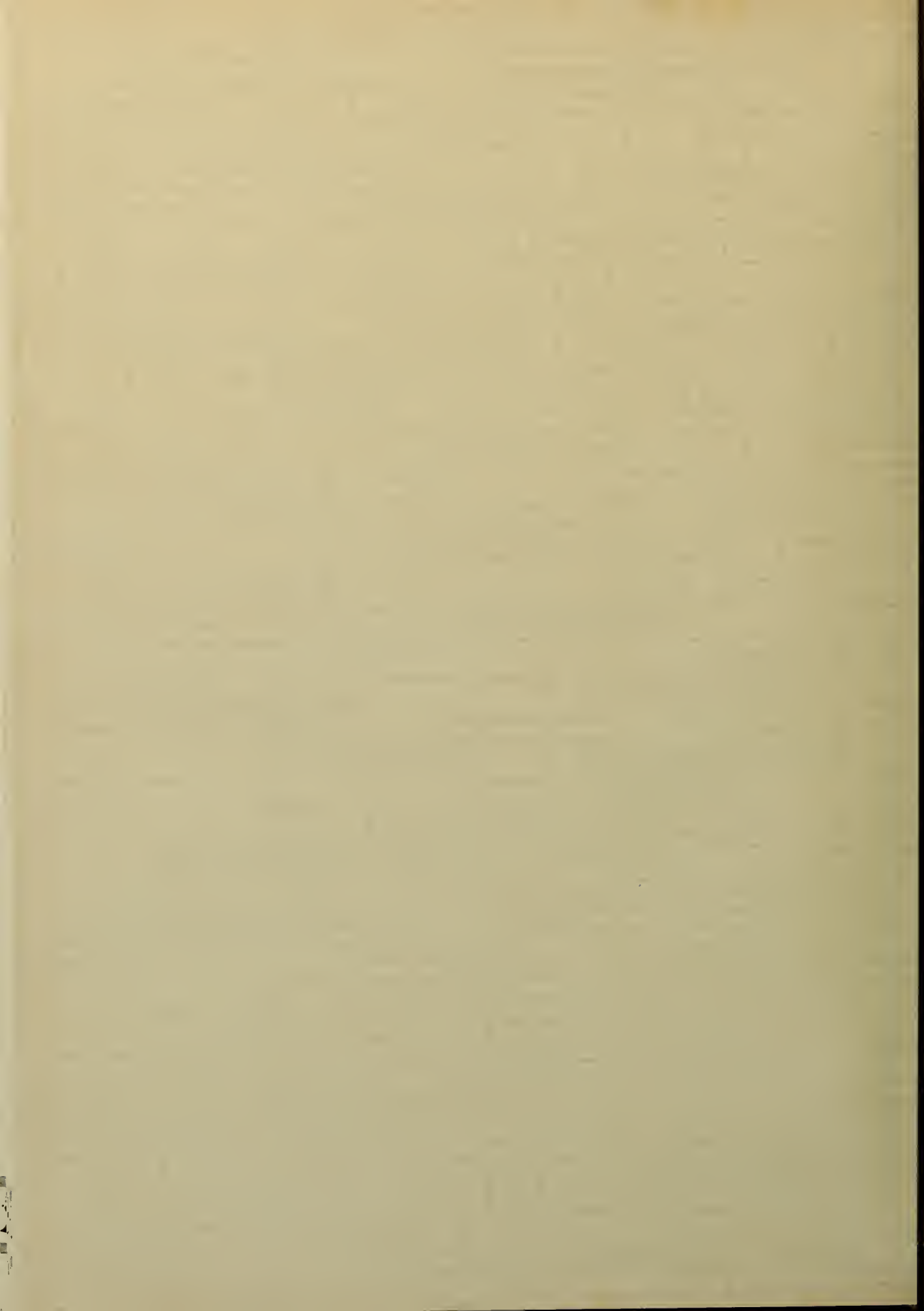


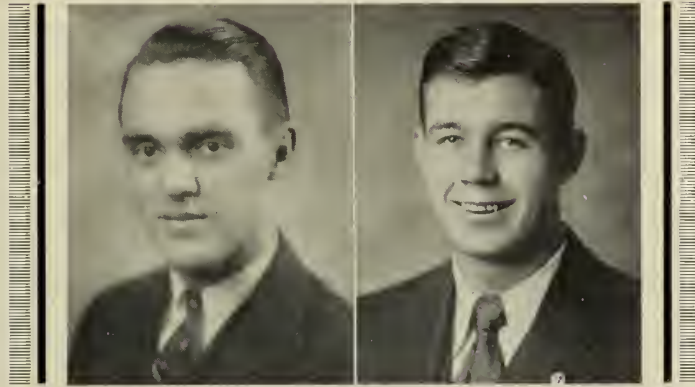


A C T I V I T I E S









## STUDENT BODY

### OFFICERS

- LAMAR KENNEDY . . . . . *President, First Term*  
FRED PHILLIPS . . . . . *President, Second Term*  
JOHN BARNES . . . . . *Vice-President*  
ISABELLA DAVIES . . . . . *Secretary*  
MILDRED WILKINSON . . . . . *Treasurer*





### STUDENT COUNCIL

LAMAR KENNEDY . . . . . *President Student Council*

#### SENIOR REPRESENTATIVES

HAZEL JOHNSON                      MARJORIE MAUNEY  
PAUL E. GWIN                        E. T. WALROND

#### JUNIOR REPRESENTATIVES

COPELAND GRAVES                      EVELYN JOHNSON                      ROBERT ALLEN

#### SOPHOMORE REPRESENTATIVES

ANN BERRY                              HENRY PARKER

#### FRESHMAN REPRESENTATIVE

MARY LOUISE WHITE





## HYPATIA

Senior Honor Society for Women

*Colors:* White and Gold

*Flower:* Yellow Rose

### MEMBERS

- MILDRED BROOK . . . . . *President*
- MARGARET PADGETT . . . . . *Vice-President*
- MADA BERRY . . . . . *Secretary-Treasurer*
- MARJORIE MAUNEY . . . . . *Historian*
- DOROTHY MCKINNEY . . . . . *Chaplain*
- ELIZABETH KRONENBERG . . . . . *Monitor*
- HAZEL JOHNSON . . . . . *Majel Mangun*



O R G A N I Z A T I O N S



Y. W. C. A.

MADA BERRY . . . . . *President*  
 BESS McCOMAS . . . . . *Vice-President*  
 MILDRED WILKINSON . . . . . *Secretary*  
 MARJORY MAUNEY . . . . . *Treasurer*

FRESHMAN COMMISSION DIRECTOR

EVELYN CALHOUN JOHNSON

CABINET MEMBERS

MARY ELLEN ADKINS  
 MARY ALGEE  
 GRACE ANDERSON  
 EVELYN ANSLEY  
 ELEANOR ARENDALE  
 ANN BERRY  
 DORIS BRIDGES

MILDRED BROOK  
 ISABELLA DAVIES  
 VIRGINIA EAGLES  
 CATHERINE HAM  
 HAZEL JOHNSON  
 DINNIE MAE MACKAY  
 EVELYN MANKER  
 EBBA LOU MOON  
 SUE NEAL

ELLEN MAE PERRY  
 VARINA SHELTON SMITH  
 VIRGINIA SPEER  
 LOUISE TIPPEN  
 KATHERINE UPSHAW  
 JULIETTE WEEKS  
 ELLOSTEIN WRIGHT

PRESIDENT FRESHMAN COMMISSION

ELOISE DENTON



B. S. U.  
CHURCH COLLEGE

The Baptist Student Union is the connecting link between the campus and the Church. It is the body of Baptist students at work in the unit organizations, under the leadership of the Baptist Student Union Council.

EXECUTIVE COUNCIL

- DR. J. C. STIVENDER . . . . . Pastor  
 ESTHA MAE IRWIN . . . . . Baptist Student Secretary  
 DR. JAMES H. CHAPMAN . . . . . Faculty Advisor
- DR. JOHN XAN . . . . . Faculty Advisor  
 JOHN JOHNSON . . . . . President  
 PARKS REDWINE . . . . . First Vice-President  
 HENRY PARKER . . . . . Second Vice-President  
 ALLAN HYATT . . . . . Third Vice-President  
 MRS. J. PAUL O'NEAL . . . . . Secretary  
 CLARA MCEACHERN . . . . . Treasurer  
 ROBERT MARSH . . . . . Reporter  
 FRED PENNINGTON . . . . . Publicity Chairman  
 MRS. J. D. TOLLERSON . . . . . Pianist  
 NEWELL MATHEWS . . . . . Chorister

REPRESENTATIVES

- SUE NEAL . . . . . Sunday School . . . . . HENRY PARKER  
 MARK LOWER . . . . . B. Y. P. U. . . . . OLAND WILSON  
 PAUL DAVIS . . . . . Baptist Student Magazine  
 GUSSIE HEIFNER . . . . . Y. W. A.  
 ROBERT LANKFORD . . . . . Mission Band  
 MARVIN GARDNER . . . . . Ministerial Association  
 MADA BERRY . . . . . Y. W. C. A.  
 TOM FORRESTER . . . . . Y. M. C. A.  
 HAZEL JOHNSON . . . . . Women's Student Government  
 LAMAR KENNEDY . . . . . Student Body





## MINISTERIAL ASSOCIATION

### OFFICERS

MARVIN GARDNER . . . . .	<i>President</i>
J. D. TOLLERSON . . . . .	<i>Vice-President</i>
JUDSON JONES . . . . .	<i>Secretary</i>
CLARENCE CLINCKSCALES . . . . .	<i>Treasurer</i>
NEWELL MATHEWS . . . . .	<i>Chorister</i>
MRS. J. D. TOLLERSON . . . . .	<i>Pianist</i>
OLEY KIDD . . . . .	<i>Pulpit Supply Chairman</i>

### MEMBERS

P. M. ACKER	OSCAR DAVIS	NOLAN KENNEDY	J. R. ROBINSON
CLAUDIS ADAMS	HOWARD DURDEN	RALPH KENNEDY	J. L. ROBISON
M. B. ARCHIBALD	C. H. EILAND	O. C. KIDD	DAISY ROWE
JULIUS AVERY	MARVIN GARDNER	ROBERT LANKFORD	WILLIAM RUTLEDGE
HOYT AYERS	R. L. GARMON	MARK LOWER	RAY SCHNEIDER
R. K. BAMBURG	CHARLES GRANADE	ROBERT MARSH	CARL SEEPE
JOHN BARNES	LAWRENCE GREER	NEWELL MATHEWS	CLIFTON SIMS
DOLPHUS BARNETT	R. HAMMOCK	R. E. MERRILL	NATHAN SIMS
ADOLPH BEDSOLE	O'DELL HESTER	WILLIAM MILNE	HENRY SISSON
A. W. BOSWELL	A. B. HIGDON	G. T. MOSLEY	J. A. SMALLWOOD
W. L. BORUM	J. H. HINGSON	WOODROW OWEN	MALCOLM STUART
HOWARD BRYANT	MAURICE HODGINS	HENRY A. PARKER	G. G. THREADGILL
B. B. BURKES	CLIFF HULING	E. N. PATTERSON	GEORGE TIDWELL
J. W. CALDWELL	JOHN ISOM	FRED PENNINGTON	J. D. TOLLERSON
G. H. CARROLL	RUSSELL JENSEN	C. B. PHILLIPS	LUTHER USRY
CLARENCE CLINCKSCALES	JOHN JOHNSON	JOHN RASCO	CECIL WARD
THOMAS CLINCKSCALES	KELLY JOHNSON	PARKS REDWINE	E. E. WELLS
GASTOR DANIEL	JUDSON JONES	FRENCH RHODES	



### PRE-LAW CLUB

#### OFFICERS

- ALLEN COOK . . . . . *President*
- ALEX McCUTCHEON . . . . . *Vice-President*
- VIRGINIA COBB . . . . . *Secretary and Treasurer*

#### MEMBERS

- |                |                  |
|----------------|------------------|
| ROBERT ALLEN   | DARNELL SINYARD  |
| JACK BELL      | FRANK SLAUGHTER  |
| GEORGE BRANNON | CLAUDE SMITH     |
| HUBERT MATE    | ED SPENCER       |
| FRED PHILLIPS  | ANDERSON WALLACE |
| JACK ROBERTSON | ARTHUR WEEKS     |
| MARIA WOODS    |                  |



## DELTA KAPPA

Honorary Debating Fraternity

CLAUDE SMITH . . . . . *President*  
 ANN BERRY . . . . . *Vice-President*  
 EVELYN ANSLEY . . . . . *Secretary*  
 OTHO BRUCE . . . . . *Treasurer*  
 JOHN MIGLIONICO . . . . . *Debate Manager*

### MEMBERS

MADA BERRY	MARK LOWER
VIRGINIA COBB	ALEX MCCUTCHEON
ALLEN COOK	HENRY PARKER
ELOISE DENTON	VARINA SHELTON SMITH
ERNEST DUNLAP	ED SPENCER
TOM FORRESTER	KATHERINE UPSHAW
MORRISON WOOD	





## THE HOWARD MASQUERS

### OFFICERS

CLAUDE SMITH . . . . . *President*  
 MARY ANDERSON . . . . . *Vice-President*  
 GLENDOLYN COLE . . . . . *Secretary-Treasurer*

### MEMBERS

EVELYN ANSLEY	MILDRED GODWIN	DIXIE PATTEN
MARY ANDERSON	MARGARET GODWIN	JACK ROBERTSON
MARY ALGEE	ARNOLD GOLDNER	CAROL SISSON
MADA BERRY	MARTHA HUGGINS	CLAUDE SMITH
DORIS BRIDGES	ROBERT HALL	HUGH FRANK SMITH
OTHO BRUCE	ROBERT LANKFORD	VARINA SHELTON SMITH
MARTHA BURNS	ROBERT MARSH	VIRGINIA SPEER
GLENDOLYN COLE	MAJEL MANGUN	EVELYN SUDDUTH
THOMAS CLINCKSCALES	HELEN MALONE	FRANCIS WHEELER, JR.
TOM DOUGLAS	EDWARD MASON	LEE MCBRIDE WHITE, JR.
VIRGINIA EAGLES	MARJORIE MAUNEY	AMASA B. WINDHAM
	CAMPBELL NAPIER	
	DAVIE NAPIER	
	HENRY PARKER	



### CHI DELTA PHI

National Honorary Literary Sorority

#### MU CHAPTER

*Established in 1924*

#### OFFICERS

- ELIZABETH KRONENBERG . . . . . *President*
- MARY KAY BROWN . . . . . *Vice-President*
- DOROTHY MCKINNEY . . . . . *Secretary*
- EVA HARGRAVE . . . . . *Treasurer*
- ELLOSTEIN WRIGHT . . . . . *Reporter*

#### MEMBERS

- |                |                  |
|----------------|------------------|
| MARGARET HOGAN | ELIZABETH McNEIL |
| THOMASA MANGUN | LOUISE TIPPEN    |
| BESS McCOMAS   | ANNIE RUTH WYNN  |



## CHI ALPHA SIGMA

Honorary Chemical Fraternity

*Established in 1920*

### OFFICERS

LEONTE SAYE . . . . .	<i>President</i>
EASTONE MELOF . . . . .	<i>Vice-President</i>
RAYMOND BELL . . . . .	<i>Secretary-Treasurer</i>
MITCHELL DUMBROW . . . . .	<i>Reporter</i>

### MEMBERS

CARL BORDENCIA	ED HAGOOD
CARL CALVERT	WALTER HARPER
BILL DELOACH	CLARA MCEACHERN
MILDRED RHODES	
HOMER STRICKLAND	
PAUL TARRANT	



O R G A N I Z A T I O N S



MCCOMAS  
*Editor*

SMITH  
*Business Manager*

THE ENTRE NOUS

BESS MCCOMAS . . . . . *Editor*  
 CLAUDE SMITH . . . . . *Business Manager*  
 STANLEY MATE . . . . . *Assistant Editor*  
 AMASA WINDHAM . . . . . *Feature Editor*

*Class Editors*

EDNA STEWART  
 HENRY SMITH  
 CLARA MCEACHERN

WALTER HARPER  
 WILMA COLLINS

J. B. KING  
 ELIZABETH GOURLEY  
 HUGH FRANK SMITH

*Athletics*

ROY FAYET

ETHEL HOWLE

VICTOR RANDOLPH

*Art Editors*

ISABEL WILSON

JACK BELL

*Activities*

PARKS REDWINE  
 EUNICE LONG

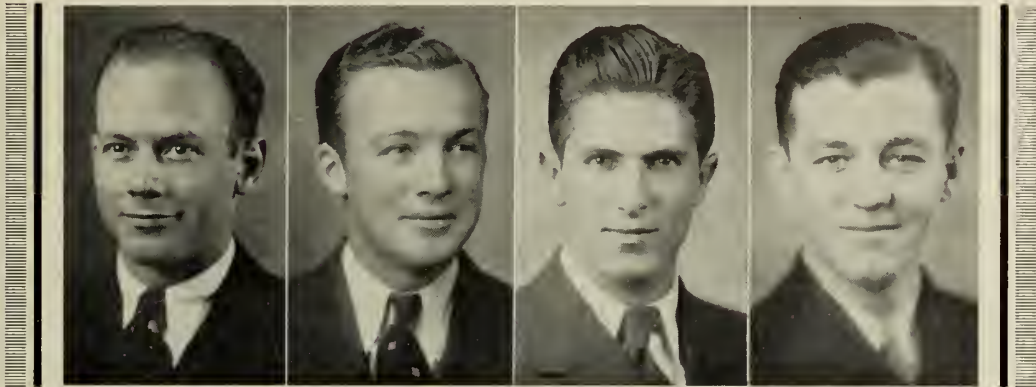
HAZEL JOHNSON  
 JOHN MIGLIONICO

VIRGINIA EAGLES  
 MARTHA HUGGINS

*Fraternities*

ALVIN OUTLAND

MILDRED WILKINSON



### THE BULL PUP AND THE CRIMSON

BARNETT WIGGINS . . . . . Editor "*Crimson*"  
MAYO MANASCO . . . . . Business Manager "*Crimson*"

The purpose of the *Howard Crimson* is to publish news regarding Howard College; to further the best interests of the students and of the institution by keeping alumni and friends in touch with Howard life.

JACK BELL . . . . . Editor "*Bull Pup*"  
OLLIE COBB . . . . . Business Manager "*Bull Pup*"

The *Bull Pup*, or "Rat Bible," is a handbook presented to Howard students each fall.





## BETA PI THETA

National Honorary French Fraternity, Founded in Birmingham, 1924.

### THETA NU CHAPTER

*Established in 1926*

*Colors: Royal Purple, Gold and White*

*Flower: Fleur-de-Lis*

#### OFFICERS

MILDRED BROOK . . . . . *President*  
 ELIZABETH KRONENBERG . . . . . *Vice-President*  
 MADA BERRY . . . . . *Secretary*  
 DIXIE PATTEN . . . . . *Treasurer*  
 IRVING WEINSTEIN . . . . . *Sentinel*  
 MARJORIE MAUNEY . . . . . *Parliamentarian*

#### MEMBERS

EVELYN ANSLEY  
 LUCILE BAND  
 MADA BERRY  
 MILDRED BROOK  
 MARTHA BURNS  
 LORIE CHAMBLEE

GLENDOLYN COLE  
 MARGARET GODWIN  
 MILDRED GODWIN  
 LAWRENCE GREER  
 MABEL HUDSON  
 HAZEL HURTT  
 ELIZABETH KRONENBERG  
 MARJORIE MAUNEY

JOHN NEWFIELD  
 DIXIE PATTEN  
 VARINA SHELTON SMITH  
 EVELYN SUDDUTH  
 DAN WATKINS  
 IRVING WEINSTEIN



# GIRLS' GLEE CLUB

*Founded 1925*

The Girls' Glee Club was organized to promote an interest in music among the women of Howard College and to secure for Howard a place in the musical circles of American colleges.

BERTHA SEVERIN-FROST, *Director*

## OFFICERS

EDNA STEWART . . . . . *President*  
EUNICE LONG . . . . . *Vice-President*  
ANN BERRY . . . . . *Secretary-Treasurer*

## MEMBERS

RUTH ALLRED	IMOGENE JONES	LIBBY JEAN REEVES
ELEANOR ARENDALE	ELIZABETH KRONENBERG	EDNA STEWART
MRS. J. H. AVERY	KATHERINE LIVINGSTON	NELLE STEWART
ANN BERRY	EUNICE LONG	CATHERINE STOVALL
MADA BERRY	ELSIE JEAN MARLOWE	JULIET WEEKS
SARA ALLRED BRYANT	EBBA LOU MOON	MILDRED WILKINSON
KATHLEEN COONER	SUE NEAL	NAUFLEET WILLIAMSON
MILDRED FRANKS	ALIECE PHILLIPS	MARIA WOODS
RUTH GRAVES	JANE PRATT	VIRGINIA WRIGHT
GUSSIE HEIFNER	JULIA REEVES	MARY YANDLE

# BOYS' GLEE CLUB

*Founded 1933*

The Boys' Glee Club was organized to encourage vocal talent among the men of Howard and to complete a well-rounded group of musical activities.

DR. FRANCIS M. WHEELER, SR., *Director*

## OFFICERS

GEORGE RAY . . . . . *President*  
HOYT AYERS . . . . . *Vice-President*  
THOMAS CLINKSCALES . . . . . *Secretary-Treasurer*  
MELVIN HYATT . . . . . *Business Manager*

## MEMBERS

MILLARD ARCHIBALD	MALCOLM HORNBuckle	J. W. POTTER, JR.
HOYT AYERS	LORIMER HENDRICKS	JOHN RASCO
GRADY BALLARD	MELVIN HYATT	FRENCH RHODES
CARL BORDENCIA	J. B. KING	T. N. STALLWORTH
HOWARD BURTON	ROBERT LANKFORD	HENRY WILLIAMS
THOMAS CLINKSCALES	LAWRENCE MCNEIL	AMASA WINDHAM
ARCHIE FREEMAN		BRADFORD WOOD

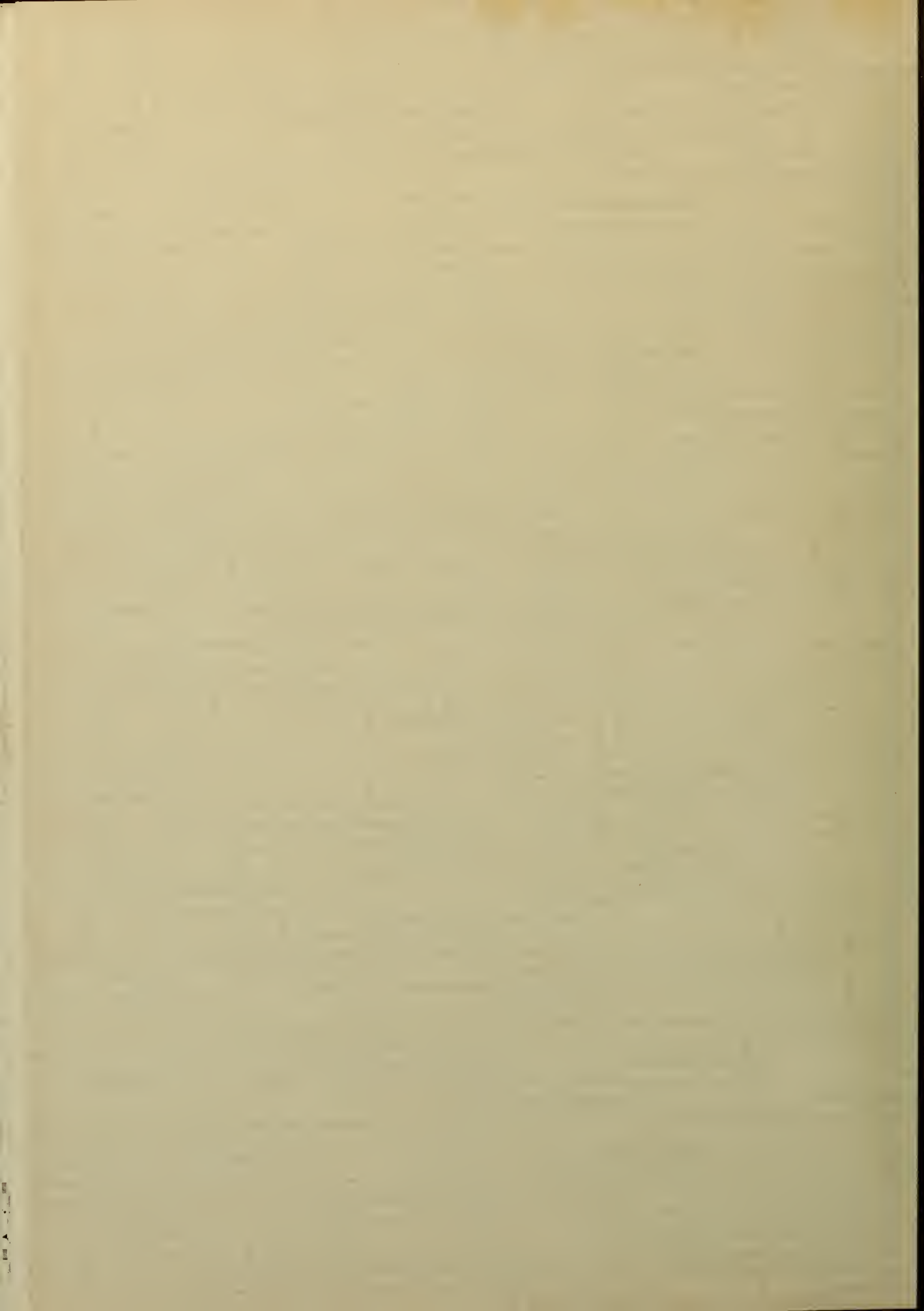




F R A T E R N I T I E S









MEN'S PAN-HELLENIC COUNCIL

This council composed of two representatives from each fraternity controls and directs the policy of each fraternity in its relations with the campus and the administration.

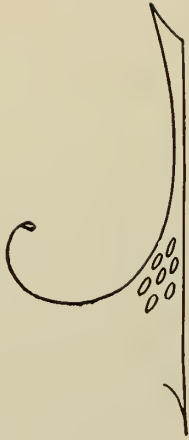
OFFICERS

- E. T. WALROND . . . . . *President*  
 JOHN MILFORD . . . . . *Secretary-Treasurer*

MEMBERS

- MARVIN BISHOP . . . . . *Π K A* . . . . . ROY FAYET  
 JOHN MILFORD . . . . . *Σ N* . . . . . ROBERT HALL  
 PAUL FREEMAN . . . . . *Σ Φ E* . . . . . PHILLIP McCURDY  
 PAUL E. GWIN . . . . . *Π K Φ* . . . . . COPELAND GRAVES  
 OLIN KELSO . . . . . *A A T* . . . . . PAUL DAVIS  
 MAYO MANASCO . . . . . *Θ K N* . . . . . ROLAND MOLPUS





"Better to be a 'has-been' than a 'might-have-been'."—*Spanish proverb.*

. . . .

"We are arrant knaves all."—*Hamlet.*

. . . .

"Birds of a feather, flock together."—*Burton.*

. . . .

"Politics make strange bedfellows."—*Jefferson.*





# P I • K A P P A • A L P H A

## FRATRES IN URBE

JOSEPH E. EMBRY  
WILSON D. BLACKWELDER  
WILLIAM H. McCARY  
DANIEL L. BLACKWELDER  
LEON F. HARRIS  
ROBERT E. DUKE  
A. LEWIS DAWSON  
ROGER W. ALLEN  
JAMES A. MOORE  
ARTHUR DUKE  
COLLIS CUNNINGHAM  
HUGH G. GRANT  
CHARLES H. MILLER  
ROBERT M. JAMES  
CLARENCE K. ANDREWS  
WALTER C. BOYKIN  
B. FOSTER ACTON  
LOVICK P. McLANE  
ARTHUR H. BRIDGES  
O. WILSON HARRIS  
HERMAN E. DEAN  
OLIN B. NEWMAN  
CHARLES W. WILLIAMS  
EMMETT D. BATES  
HOMER A. CASEY  
O. THURSTON ALFORD  
JULIAN S. BORESS  
W. H. HEAD  
DANIEL A. GAYLORD  
R. WALDEN WEBB

GEORGE E. MANLEY  
WILLIAM A. LOGAN  
CLARENCE W. ALLGOOD  
WILLIAM L. LENDERMAN  
JACKSON L. GREGORY  
H. E. WATLINGTON, JR.  
C. HAMILTON STEPHENS  
NORMAN C. SUDDITH  
R. A. NUNNELLEY, JR.  
WILLIAM J. GOUGH  
CHARLES K. WIER  
EUGENE R. DAWSON  
RUSSELL H. TINKLEPAUGH  
RICHARD A. CLAYTON  
FRED C. FREEMAN  
ANDREW H. KNIGHT  
F. EVERETTE WILLIAMS  
A. CLIFTON STEPHENSON  
GUY LEWIS BURNS  
HAROLD S. TINKLEPAUGH  
WALTER O. FORD  
PHILLIP H. ALFORD  
PAUL W. ALSTON  
CHARLES E. PETTY  
GEORGE B. SHELBURNE  
PAUL W. SCOKELE  
CARLTON P. KETCHAM  
WILLIAM B. INMAN, JR.  
CLYDE B. MAXWELL  
J. C. MCGHEE  
ROLAND SMITH  
J. NEWTON BASS  
J. GEORGE BASS, JR.  
JAMES T. HEARN  
CHARLES D. WOOD  
HENRY H. JONES  
EDWARD F. NUNNELLEY

RAYMOND G. KNIGHT  
T. EUGENE WHEELER  
PROCTER H. BARNETT  
WILLIAM F. AYCOCK, JR.  
WILLIAM H. GRIMMER  
J. JOHN FINKLEA, JR.  
J. ARTHUR DUMAS, JR.  
J. HAROLD FREEMAN  
LOUIE F. McCROSKEY  
CHESTER O. GRIFFITH  
MURRAY S. CAWTHORNE  
MITCHELL H. BURNS  
JESSE E. CHANDLER, JR.  
H. MARTIN NUNNELLEY  
JAMES C. TOLSON  
J. ALFRED TURNIPSEED  
CHARLES L. ARLEDGE  
LUCIAN R. ALGEE  
M. LUTHER LANCASTER  
GEORGE D. CURY  
W. D. MANASCO, JR.  
F. WELBORN HARDIE  
ALFONSO S. BARGER  
T. HENDON BLAYLOCK  
PAUL C. O'DELL  
W. JACOB FREEMAN  
J. WOOD BRADFORD  
ROBERT D. CONNOR  
JOHN A. COKER, JR.  
MARVIN D. BISHOP, JR.



# PI KAPPA ALPHA

Founded at University of Virginia, 1868



## ALPHA PI CHAPTER

*Established 1911*

*Colors:* Garnet and Old Gold

*Flower:* Lily of the Valley

*Publication:* "Shield and Diamond"

### FRATER IN FACULTATE

LOVICK P. McLANE

### FRATRES IN COLLEGIO

#### *Class of 1934*

ROY FAYET . . . . . Birmingham, Ala.	TOM SMITH . . . . . Birmingham, Ala.
ALVAN OUTLAND . . . . . Birmingham, Ala.	E. T. WALROND . . . . . Birmingham, Ala.
BARNETT WIGGINS . . . . . Headland, Ala.	

#### *Class of 1935*

TOM FORRESTER . . . . . Birmingham, Ala.	FRANK HICKS . . . . . Birmingham, Ala.
WALTER HARPER . . . . . Birmingham, Ala.	JACK MEACHAM . . . . . Birmingham, Ala.

#### *Class of 1936*

MARVIN BISHOP . . . . . Birmingham, Ala.	EARL MACKEY . . . . . Birmingham, Ala.
TOM GARNER . . . . . Birmingham, Ala.	JAMES NUNNELLEY . . . . . Birmingham, Ala.
RICHARD GWALTNEY . . . . . Birmingham, Ala.	A. M. REID . . . . . Birmingham, Ala.
BILL HEARD . . . . . Birmingham, Ala.	FRANK SLAUGHTER . . . . . Birmingham, Ala.
W. J. ISAACS . . . . . Birmingham, Ala.	BOB THOMPSON . . . . . Birmingham, Ala.
JIM THOMPSON . . . . . Birmingham, Ala.	

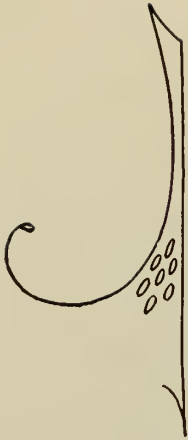
#### *Class of 1937*

McLANE BORLAND . . . . . Pinckard, Ala.	WINFRED GRISSOM . . . . . Birmingham, Ala.
HAROLD CARTER . . . . . Selma, Ala.	LONNIE LINDSEY . . . . . Gainesville, Fla.
ED EUBANKS . . . . . Decatur, Ala.	JACK LLOYD . . . . . Birmingham, Ala.
EARL GRIFFIN . . . . . Birmingham, Ala.	JACK TURNER . . . . . Birmingham, Ala.









"Snakes, with few exceptions, are harmless."—*Manual of Zoology.*

. . . .

"We'll teach you to drink deep, ere you depart."—*Hamlet.*

. . . .

"He that falls in love with himself will have no rival."—*Franklin.*

. . . .

"Eat, drink, and be merry, for tomorrow we may die."—*Old proverb.*



# SIGMA • NU • FRATERNITY

## FRATRES IN URBE

R. NELSON ABERCROMBIE  
WILLIAM A. ABERCROMBIE  
WILLIAM R. ABERCROMBIE  
BENNETT R. ADAMS  
JAMES W. AIRD  
JOHN B. AIRD  
JAMES A. ALLEN  
VASSAR L. ALLEN  
JOHN W. ALTMAN  
NEAL L. ANDREWS  
ROBERT E. ANSLEY  
MARTIN M. BALDWIN  
CLARENCE B. BALLARD  
WILLIAM H. BANCROFT  
JOHN Y. BASS  
JOSEPH N. BENSON  
HAZARD J. BENTLEY  
OSCAR L. BENTLEY, JR.  
UPSHAW C. BENTLEY  
WILLIAM C. BENTLEY  
ROBERT C. BERRY  
THOMAS E. BONDURANT  
HARRY B. BRADLEY  
LEON C. BFADLEY  
ASHER S. BRAGAN  
GEORGE D. BROOKS  
THURSTON D. BROWN  
WILLIAM L. BROWN  
WILLIAM N. BURCHFIELD  
BORDEN H. BURR  
WILLIAM H. BURR  
JOHN M. CAHALAN  
EHNEY A. CAMP  
DAVID O. CARLISLE  
ROBERT R. CARLISLE  
EDGEWORTH S. CASEY  
OSCAR S. CAUSEY  
JAMES B. CAWTHON  
CHARLES T. CLAYTON  
FRED H. COLLEY  
JOSEPH T. COLLINS  
ARMSTRONG CORY  
EARNEST B. COSPER  
JESSE COUNTS  
CLARENCE D. COX  
ROY R. COX  
MERRET S. CRAFT  
EDGAR A. CRANDALL  
CHARLES M. CURTIS  
EDGAR W. DALY  
ARTHUR S. DANIELS, JR.  
BUNYAN DAVIE, JR.  
CLARENCE DENICKE  
SAMUEL M. DILLARD  
CHARLES S. DOSTER  
JAMES T. DOSTER, JR.  
JOHN H. DINNING  
THOMAS L. DOUGLAS  
FRANK M. DOWNS  
BENJAMIN J. DRYER  
JAMES DUNLAP  
MILTON R. DURRETT  
MANNING B. EAGLES  
IKE B. FEAGIN  
BURR FERGUSON  
HILL FERGUSON  
HENRY V. FITZ  
ORMAN FORMAN  
ARTHUR B. FOSTER  
CHARLES H. FRANKLIN  
JOHN H. FRYE  
WALTER B. GAINES  
LUCINE D. GARDNER  
HUGH P. GOURLEY  
MILLIARD L. GOURLEY  
THURLOW C. GUINN  
GEGRGE P. HAMILTON  
DREA M. HAYNES  
JOSEPH D. HEACOCK, JR.  
ROBERT M. HENDERSON  
WILLIAM H. HICKS  
ROBERT C. HILL  
WILLIAM T. HIX  
JOHN M. HODO  
JOHN F. HOGAN  
MARSHALL D. HOGAN  
MARION E. HOGAN  
SOLON L. HOOD  
GEORGE W. HOPSON, JR.  
TOM E. HUEY  
JAMES JARRELL, JR.  
JOHN S. JEMISON  
LEONARD JEMISON  
ROBERT B. JONES  
WILLIAM M. JONES  
THOMAS J. JUDGE  
JACK JUSTICE  
SAMUEL B. KELLY  
WILLIAM M. KELLY  
JOHN L. KIDD  
STEVEN B. KINARD  
ROBERT P. KINCAID  
ROBERT L. KING  
KYLE J. KINKEAD  
WILLIAM C. KNOPF  
GEORGE W. LANIER  
JOHN M. LAW  
JOYCE P. LEVY  
WILLIAM H. LEWIS  
WILLIAM H. LOLLAR  
EVANS D. LONG  
HUBERT D. LONG  
JESS O. LONG  
A. P. LONGSHORE, JR.  
JAMES R. LONGSHORE  
RAUP J. LONGSHORE  
MORRIS LOVEMAN  
THOMAS J. LUCKIE  
HENRY D. LYMAN  
DWIGHT H. MANGUM  
FLOYD V. MARTIN  
WILLIAM E. MATTHEWS  
RALPH M. MARX  
GEORGE M. MASON  
LUTHER W. MATTHEWS  
DANIEL W. McCALL  
WILLARD A. McCALL  
WILLIAM L. McCARTY  
EMMETT N. McCONNELL  
CHARLES M. McCRUM  
CARTER T. McDONALD  
GEORGE I. McDONALD  
JAMES C. McGeHEE  
LEE McGRUFF  
ROBERT G. McLESTER  
RAYMOND L. McPHAUL  
JAMES A. MERRELL  
LAURENS W. MILNER  
JOHN D. MONROE  
FRED G. MOORE  
GEORGE D. MORRIS  
JOHN C. MORROW  
DANIEL F. H. MURPHEY  
NATHAN C. NAPIER  
WILLIAM M. NEAL  
WALTER M. NOEL  
EDWARD R. NORMAN  
JEFFERSON D. NORMAN  
AUGUSTUS G. OVERTON  
JAMES E. PARKER  
JAKE L. PATER  
JESSE H. PERDUE  
HERBERT A. PETTUS  
WALTER E. PHILLIPS  
JACK B. PORTERFIELD  
WILLIAM L. PRATT  
JOHN F. PRESLEY  
ROBERT J. PROWELL  
CHARLES D. RIDDLE  
WILLIAM G. RIDDLE  
HUGH W. ROBERTS  
MEMORY L. ROBINSON  
EDWARD P. ROSAMOND  
WALTER B. ROUNTREE  
EDMUND W. RUCKER, JR.  
CHARLES B. RYAN, JR.  
YANCY L. SENN  
RUDOLF C. SHARPE  
GEORGE L. SIMCOX  
EDGAR V. SMITH  
JAMES Q. SMITH  
MACLIN F. SMITH  
ORMOND SOMERVILLE, JR.  
OVID B. SPARKS, JR.  
ARTHUR STANSEL, JR.  
JOHN M. STARKE, JR.  
JOHN F. STEINER  
FRANK H. STEPHENSON  
DOUGLASS W. STOCKHAM  
RICHARD J. STOCKHAM  
OTTO C. STOELKER  
SIGNOR S. STRONG  
ROBERT N. STUBBS, JR.  
WILLIAM H. STUBBS  
SOLON B. SUDDUTH, JR.  
CHARLES P. THOMAS  
JOSEPH S. THOMASON  
GEORGE L. THOMPSON  
HUGH B. THOMSON  
SAMUEL B. TILLMAN  
ARTHUR P. TURNER  
PERRY W. TURNER  
WILLIAM WALDROP  
WILLIAM J. WALDROP  
CHARLES R. WALSTON  
GEORGE C. WALTER  
GEORGE C. WALTER, JR.  
EDWARD E. WHEELER  
JOHN R. WHITE  
MAURICE S. WHITESIDE  
LAWRENCE S. WHITTEN  
ELLIOTT T. WILLIAMS  
MONROE L. WILSON  
AMASA B. WINDHAM  
DOUGLAS P. WINGO  
JAMES H. WISE  
NORMAN C. WOOD  
WILLIAM T. WOOD

# SIGMA • NU • FRATERNITY

Founded at V. M. I., 1869



## IOTA CHAPTER

*Established 1870*

*Colors:* Gold, Black and White

*Flower:* White Rose

*Publication:* "The Delta"

### FRATRES IN FACULTATE

OSCAR S. CAUSEY

WILLIAM H. BANCROFT

JOSIAH D. BANCROFT

### FRATRES IN COLLEGIO

*Class of 1934*

TOM DOUGLAS . . . . . Birmingham, Ala.      EDWARD MASON . . . . . Columbus Grove, O.  
WINSTON V. LEGGE . . . . . Athens, Ala.      CAMPBELL NAPIER . . . . . Birmingham, Ala.  
AMASA B. WINDHAM . . . . . Birmingham, Ala.

*Class of 1935*

J. MELVIN BENTLEY . . . . . Birmingham, Ala.      JOHN J. MILFORD, JR. . . . . Huntsville, Ala.  
ROBERT HALL . . . . . Birmingham, Ala.      GEORGE RAY . . . . . Columbus, Ga.

*Class of 1936*

OTHO B. BRUCE . . . . . Birmingham, Ala.      J. B. KING . . . . . Birmingham, Ala.  
DAVID CURRY . . . . . Birmingham, Ala.      L. C. SIMS . . . . . Birmingham, Ala.  
TOM FLOYD . . . . . Birmingham, Ala.      JACK ROBERTSON . . . . . Birmingham, Ala.  
FRANK HARRISON . . . . . Birmingham, Ala.      MORRISON G. WOOD . . . . . Birmingham, Ala.  
CAMPBELL KIDD . . . . . Birmingham, Ala.      JOE WURTELE . . . . . Ensley, Ala.

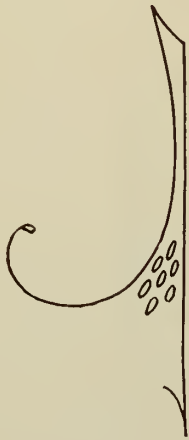
*Class of 1937*

JUDSON D. COLLEY . . . . . Troy, Ala.      JOHN D. HARRELL . . . . . Thomaston, Ala.  
ANDERSON WALLACE . . . . . Birmingham, Ala.









"Dandies, when first rate, are generally very agreeable men."—*Bulwer*.

. . . .

"An empty purse and a new house make a man wise, but too late."—*Portuguese proverb*.

. . . .

"Men with little business are great talkers."—*French maxim*.

. . . .

"To be a politician you need only to study your own interests."—*O'Rell*.



# P I • K A P P A • P H I

## FRATRES IN URBE

DEWEY ACKER  
ALLISON AMENT  
BURDETT BATES  
PETE BRICE  
LENT S. BREWSTER  
J. CHANDLER BURTON  
CECIL A. CARLISLE  
FRANK CHAMBERS  
DR. M. T. DAVIDSON  
G. IRA DUNSMORE  
J. FRANCIS FLETCHER  
WILLIAM S. FULLER  
WILLIAM HELLIER  
V. HAIN HUEY  
STEADHAM ACKER  
WARREN ARRASMITH  
W. A. BERRY  
FESTUS BRIDGES  
LUCIEN G. BROWN  
EDWARD E. BEASON  
DR. CHARLES J. COLQUETT  
DR. EDWARD L. CUMBEE  
R. J. DENDY  
ADAM DREHER  
GEORGE C. FREEMAN  
CURTIS B. HASTY  
THOMAS E. HUEY  
CARL HARRISON

OTIL LAWSON  
J. CARLTON LEE  
ROBERT MONTGOMERY  
FRED L. McDONALD  
AUBREY S. MIREE, JR.  
W. P. McWILLIAMS  
W. R. NETTLES  
C. S. O'DELL, JR.  
HARRY W. PRATER  
PERKINS J. PREWETT  
DR. LEIGHTON C. PARNELL  
LOUIE REESE, JR.  
AL C. REEVES  
W. O. STEPHEN, JR.  
DR. L. B. STRONG, JR.  
ROBERT SHELTON  
F. CLAYTON ALBERT  
HOWARD D. LEAKE  
MARION LEE  
FRANK MCKISSAC  
ERSKIN McNARON  
WIMBERLY MIREE  
ELWOOD MACKEY  
CHARLES R. NEWSOM  
ROBERT K. PERKINS  
HOYT PRATER  
JULIAN PINKSTON  
DR. W. E. PRESCOTT, JR.  
EARL T. ROGERS  
ALBERT LEE SMITH  
JOHN SIBLEY  
FRED STREIT, JR.  
W. M. SMITH, JR.

JESSE STALLINGS  
R. GREY TATE  
JOE VAUGHN  
DR. SAM WAINWRIGHT  
RAYMOND L. WARE  
CHARLES THOMPSON  
HUGH FITE  
RALPH HAWKINS  
ELMER V. LEVIE  
WILLIAM D. McLAREN  
DR. J. HURLEY KNIGHT  
E. M. STRICKLAND  
EMMETT JACKSON  
HILL D. SMITH  
ROBERT LEE TATE  
J. V. THOMAS  
C. P. UNDERWOOD  
J. MAYFIELD WARD  
RAY SCHULTZ, JR.  
ED MUNDINE  
EDGAR ALMGREN  
MELL F. JACKSON, JR.  
THEODORE K. MAULDIN  
EDWARD H. VICE  
STEPHEN C. BROWN  
CARL PARK  
HAROLD STEPHENS  
HORACE MANN  
DR. T. V. NEAL





# P I • K A P P A • P H I

Founded at College of Charleston, 1904



## ALPHA ETA CHAPTER

*Established 1925*

*Colors:* Gold and White

*Flower:* Red Rose

*Publication:* "Star and Lamp"

### FRATRES IN FACULTATE

THOMAS V. NEAL

W. E. PRESCOTT, JR.

### FRATRES IN COLLEGIO

#### *Class of 1934*

JAMES B. GWIN . . . . . Bessemer, Ala.	LEE HALL . . . . . Swaim, Ala.
PAUL E. GWIN . . . . . Sumiton, Ala.	SAM W. JONES . . . . . Pine Apple, Ala.
JOE HALL . . . . . Swaim, Ala.	HENRY SMITH . . . . . Alexander City, Ala.

#### *Class of 1935*

ROBERT ALLEN . . . . . Birmingham, Ala.	JAMES EDWARDS . . . . . Mobile, Ala.
HOWELL BENNETT . . . . . Dothan, Ala.	COPELAND GRAVES . . . . . Blountsville, Ala.
PAUL H. COX . . . . . Clanton, Ala.	EVERETT INGRAM . . . . . Ashland, Ala.

#### *Class of 1936*

HENRY ALLEN PARKER . . . . . Mobile, Ala.	CALVIN PETTEY . . . . . Decatur, Ala.
---	---------------------------------------

#### *Class of 1937*

PAUL ALLEN . . . . . Birmingham, Ala.	GLENN HEARN . . . . . Albertville, Ala.
FAY ASKEW . . . . . Dothan, Ala.	ROBERT JAMES . . . . . Birmingham, Ala.
LUPTON BAINES . . . . . Blountsville, Ala.	J. E. LEE . . . . . Decatur, Ala.
JACK BELL . . . . . Dothan, Ala.	ZEB VANCE LUCAS . . . . . Ashland, Ala.
I. D. BRITT . . . . . Tallassee, Ala.	BERNARD MACHIN . . . . . Albertville, Ala.
HENRY LEE BURGETT . . . . . Guntersville, Ala.	ALEX MCCUTCHEON . . . . . Birmingham, Ala.
OLLIE COBB . . . . . Jasper, Ala.	MALLORY RAMSEY . . . . . Ashland, Ala.
LEVERT WILLIAMS . . . . . Decatur, Ala.	





# THETA · KAPPA · NU

*Founded: 1924*



## ALABAMA ALPHA CHAPTER

*Established 1924*

*Colors: Silver, Black and Crimson*

*Flower: White Rose*

*Publication: "Theta Kappa Nu News"*

### FRATRES IN FACULTATE

PAUL BARNETT

RAY DAVIS

### FRATRES IN COLLEGIO

#### *Class of 1934*

HICKMAN EWING . . . . . Memphis, Tenn.	HERBERT LYKES . . . . . Birmingham, Ala.
JEREMIAH FENN . . . . . Birmingham, Ala.	MAYO MANASCO . . . . . Townley, Ala.
LAMAR KENNEDY . . . . . Brundige, Ala.	VICTOR M. RANDOLPH . . . Birmingham, Ala.

#### *Class of 1935*

HORACE GUTTERY . . . Carbon Hill, Ala.

#### *Class of 1936*

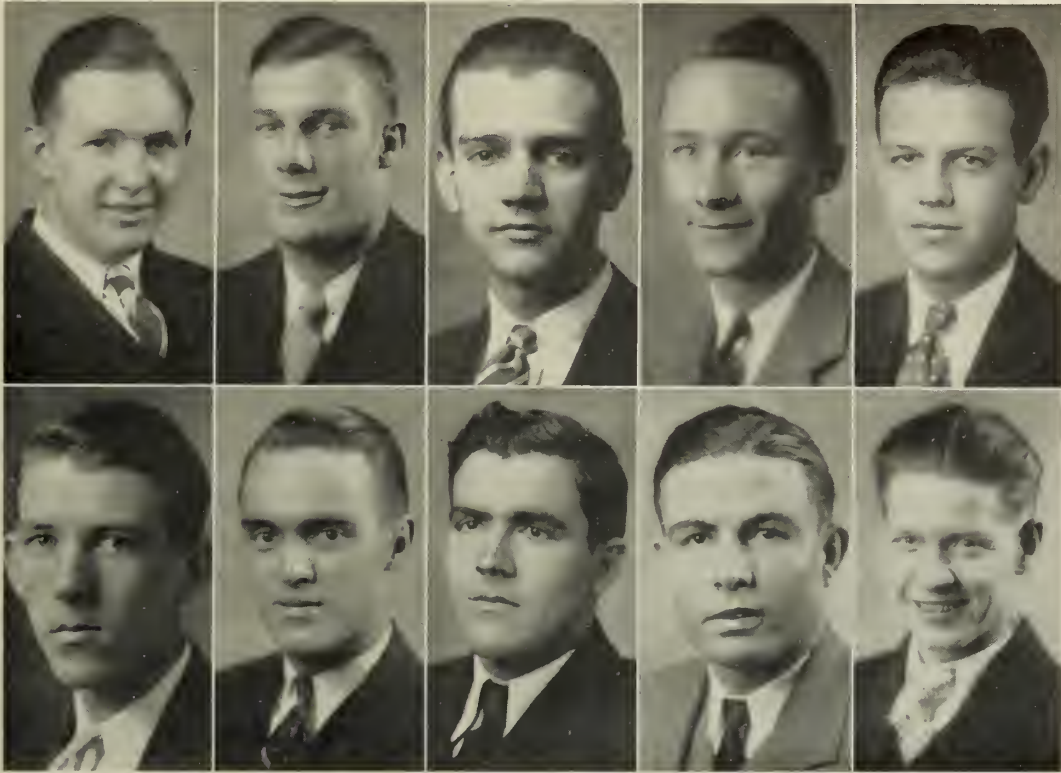
PETE ALLEN . . . . . Birmingham, Ala.	HERMAN INGRAM . . . . . Sylacauga, Ala.
TRUMAN BASS . . . . . Birmingham, Ala.	HAROLD JONES . . . . . Birmingham, Ala.
LEO BRAZIL . . . . . Northport, Ala.	ROLAND MOLPUS . . . . . Mobile, Ala.
JOHN R. FENN . . . . . Birmingham, Ala.	R. M. MOLPUS . . . . . Mobile, Ala.
EWING HARBIN . . . . . Birmingham, Ala.	FREDDY MORRIS . . . . . Brownsville, Tenn.
ROY MYRICK . . . . . Coffeenville, Ala.	

#### *Class of 1937*

CHARLES BELL . . . . . Townley, Ala.	LESLIE FUQUA . . . . . Birmingham, Ala.
RAYMOND CHRISTIAN . . North Port, Ala.	ROBERT KILLINGSWORTH . Birmingham, Ala.
BILLY FENNELL . . . . . Tarrant City, Ala.	MORRIS PICKENS . . . . . Sheffield, Ala.
CHARLES WILCOX . . . . . Mobile, Ala.	







*"You gotta be a football hero to be in love with a beautiful girl."—Song.*

*"Might is right."—Hindenburg.*

*"We easily forget crimes that are known only to ourselves."—Rochefauld.*

*"The face is the index of the mind."—Latin proverb.*



# ALPHA • LAMBDA • TAU

*Founded: 1916*



## ETA CHAPTER

*Established 1926*

*Colors: Gold and Black*

*Flower: American Beauty Rose*

*Publication: "The Alpha Lambda Tau Rose Leaf"*

### FRATRES IN COLLEGIO

*Class of 1934*

DEWITT DUNN . . . . . Tallassee, Ala.      PETE ESTES . . . . . Cullman, Ala.

*Class of 1935*

OLIN KELSO . . . . . Birmingham, Ala.      E. N. PATTERSON . . . . . Birmingham, Ala.  
CHESTER MACOMBER . . . . . North Platte, Neb.      PRESTON LANGSTON . . . . . Bessemer, Ala.  
JAMES TURNER . . . . . Cropwell, Ala.

*Class of 1936*

GILES BAKER . . . . . Birmingham, Ala.      PAUL DAVIS . . . . . Cherokee, Ala.  
TRACY BURGER . . . . . Gadsden, Ala.      WOODROW HEARN . . . . . Grossville, Ala.  
JAMES CANTRELL . . . . . Birmingham, Ala.      ARTHUR INMAN . . . . . Townley, Ala.  
HARRY JOHNSTON . . . . . Birmingham, Ala.

*Class of 1937*

HERBERT BROWNE . . . . . Tarrant City, Ala.      LOUIS SEALE . . . . . Bessemer, Ala.  
ROBERT O'DANIEL . . . . . Tallassee, Ala.      JAMES TAYLOR . . . . . Columbiana, Ala.  
BUEIL WARREN . . . . . Rogersville, Ala.





"Who does nothing with a better grace?"—*Edw. Young.*

"Puellis nuper idoneus—fitted for girls; ladies men."—*Horace.*

"Since we cannot get what we like, let us like what we can get."—*Franklin.*

"All is to be feared where all is lost."—*Byron.*





*He wore his college frat pin  
Just southward of his heart,  
And vowed that from that resting place  
That pin should ne'er depart.*

*The passing years still found him  
E'er firm, and standing pat,  
Wearing his college frat pin,  
In honor of his frat.*

*One day two eyes confused him,  
His high resolve took chase,  
A soft voice coaxed the frat pin  
From its abiding place.*

*Now they're in a bungalow  
With welcome on the mat;  
The frat pin?—fastens baby clothes,  
In honor of his frat.*



## WOMEN'S PAN-HELLENIC COUNCIL

Composed of two representatives from each sorority, the council controls and directs all the sororities, especially with reference to rushing season, and also guides the policy of the sororities in their relations with the administration.

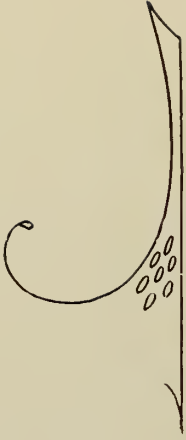
### OFFICERS

CLARA McEACHERN . . . . .	<i>President</i>
EVELYN C. JOHNSON . . . . .	<i>Vice-President</i>
KATHERINE UPSHAW . . . . .	<i>Secretary</i>
VIRGINIA COBB . . . . .	<i>Treasurer</i>

### MEMBERS

SUE NEAL . . . . .	. A Δ Π . . . . .	JUNE SHARPLES
ELIZABETH BROWN . . . . .	. Φ Μ . . . . .	DORIS BRIDGES
EVELYN C. JOHNSON . . . . .	. B Σ O . . . . .	ELLEN MAE PERRY
MAJEL MANGUN . . . . .	. Δ Z . . . . .	ETHEL HOWLE
MILDRED WILKINSON . . . . .	. B Φ A . . . . .	KATHERINE UPSHAW
VIRGINIA COBB . . . . .	. A Δ Θ . . . . .	HAZEL JOHNSON





"Those who are high are usually dizzy."—*Rogers.*

. . . .

"Terrible, strange, sublime and beautiful shapes."—*Prometheus Unbound.*

. . . .

"This world belongs to the energetic."—*Emerson.*

. . . .

"Always occupied with the duties of others, never, alas! with their own."—*Rocheffauld.*





# D E L T A • Z E T A

## SORORES IN URBE

MILDRED H. ABLE  
SAMMIE H. BANCROFT  
EVA P. BRANSCOMB  
BERTHA BARRETT  
MILDRED BASENBURG  
MARGARET BEYER  
ORA D. BOHANNON  
MARY FRANK CHAPPELL  
MARY N. CAROLL  
HAZEL CUMBEE  
KATHERINE DAVIS  
SARA H. DAVIS

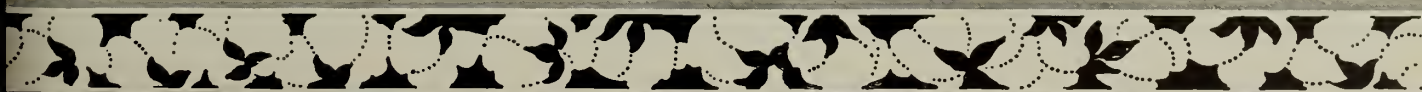
VICTORIA DAVIS  
MARY NELL DOVEL  
MAXINE DUPUY  
STUART DUPUY  
SALLIE J. EAGLES  
LEONA FELTUS  
FRANCES FERRELL  
NELLIE GRACE FREEMAN  
FRANCES OSBORNE FULLER  
FRANCES B. GOURLEY  
FRANCES M. GREEN  
SUSIE GULLEDGE

MARGARET HANLIN  
JOSEPHINE HARGROVE  
MARY E. MCPHERSON  
MARGARET HASSLER  
ANNABELLE HENDON  
NELL H. HOWARD  
ANNA J. HOWLE  
OLIVIA JACOWAY  
JEAN LAN KITCHELL  
DOT M. LAMBERT  
HELEN LANE  
AILEEN G. LENDERMAN

MARY LOU MARTIN  
BENNIE S. MASON  
ADDILEE MATTISON  
LOUISE B. MAXWELL  
ANNIE GARRON McCRORY  
MABEL T. McCUTCHEON  
EDITH F. McELROY  
MARGARITE MATTOCK  
MILDRED MAXWELL  
CORNELIA H. MESSEN  
BONNIE MOXLEY  
JIMMIE NEWMAN

MARIE N. NORTON  
WILMA B. NUNNELLEY  
HAZEL C. ODOM  
ETHYLENE OLIVER  
BILLIE E. PARSONS  
HAZEL PAWSON  
DOROTHY PETERSON  
AUGUSTA PIATT  
NANNIE MYRTLE PRICE  
MARY C. RANDALL  
IVIE PEARL RAY  
ELIZABETH SADLER

ARNICE SHELTON  
EDNA A. SMITH  
MARY SILVER  
LOUISE SAUNDERS STEWART  
ELIZABETH STOCKARD  
FRANCE N. STONE  
LYDE THOMASSON  
THERA M. TOWERY  
ATHOLINE A. WAKEFIELD  
MARY K. WATERS  
SARA N. YANGER



# DELTA • ZETA

Founded at Miami University, 1902



## ALPHA PI CHAPTER

*Established 1921*

*Colors:* Old Rose and Vicux Green

*Flower:* Killarney Rose

*Publication:* "Lamp"

### SORORES IN FACULTATE

Mrs. W. E. BOHANNON                      ANNABELLE HENDON  
THERA MAE TOWERY

### SORORES IN COLLEGIO

#### *Class of 1934*

DOROTHY CASON . . . . Birmingham, Ala.                      OCTAVIA MARTIN . . . . Birmingham, Ala.  
MAJEL MANGUN . . . . Birmingham, Ala.                      MARJORIE MAUNEY . . . Birmingham, Ala.  
MILDRED MAXWELL . . . Birmingham, Ala.

#### *Class of 1935*

GLENDOLYN COLE . . . Birmingham, Ala.                      THOMAS A. MANGUN . . Kansas City, Kan.  
VIRGINIA EAGLES . . . Birmingham, Ala.                      HAZEL PAWSON . . . . Birmingham, Ala.  
ETHEL HOWLE . . . . Birmingham, Ala.                      LEONTE SAYE . . . . Birmingham, Ala.  
IDELL TURNER . . . . . Columbiana, Ala.

#### *Class of 1936*

MARTHA BURNS . . . . Birmingham, Ala.                      STELLA JONES . . . . Birmingham, Ala.  
MARGARET GODWIN . . . Birmingham, Ala.                      HELEN MALONE . . . . Birmingham, Ala.  
MILDRED GODWIN . . . Birmingham, Ala.                      GRACE MANGUN . . . . Birmingham, Ala.  
MARY LENA TAYLOR . . Birmingham, Ala.

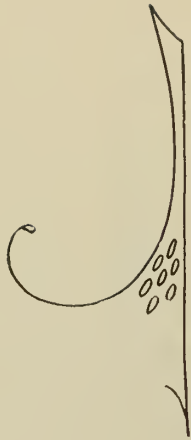
#### *Class of 1937*

BERNICE BELLSNYDER . . Birmingham, Ala.                      MARY LOUISE HURLEY . Birmingham, Ala.  
DOROTHY COLE . . . . . Attalla, Ala.                      WILMA MACDONALD . Hendersonville, N. C.  
REBECCA DAILY . . . . Birmingham, Ala.                      ZELMA MCKEWEN . . . Birmingham, Ala.  
SARA FERRELL . . . . . Birmingham, Ala.                      LEMOYNE WEST . . . . Birmingham, Ala.









"Figures, strange and quaint."—*Coleridge*.

. . . .

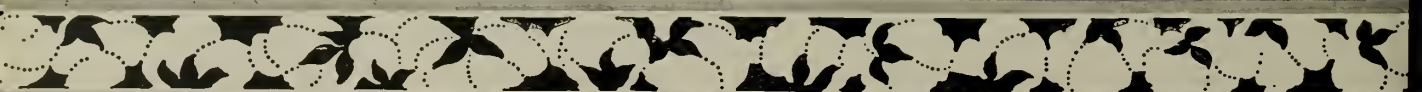
"Soon hot, soon cold."—*Hebrew maxim*.

. . . .

"Actions speak louder than words."—*Franklin*.

. . . .

"No politics disturb their mind."—*Goldsmith*.



## Perfect Day

OF

BETA SIGMA OMICRON

*When you come to end of a perfect day,  
And life seems a tranquil dream;  
When you've lived and loved in that blessed way  
That makes happiness seem supreme;  
Do you know what the end of a perfect day  
Can mean to a Beta Sig?  
She's fulfilled her purpose with spirits gay  
And she knows what joy 'tis to serve.*

*Well many days have been perfect days  
For some of our sisters dear;  
They have served, they have loved,  
Have found friendship true,  
And each in her task insists  
That the Ruby and Pink be her guiding light  
And the emblem's sign ne'er cease;  
So when life's shadows darken into night  
May each Beta Sig find peace.*

—By HELEN McCORMICK.

# BETA • SIGMA • OMICRON

Founded at University of Missouri, 1888



## BETA BETA CHAPTER

*Established 1933*

*Colors:* Ruby and Red

*Flower:* Killarney Rose

*Publication:* "The Urn"

### SORORES IN COLLEGIO

*Class of 1935*

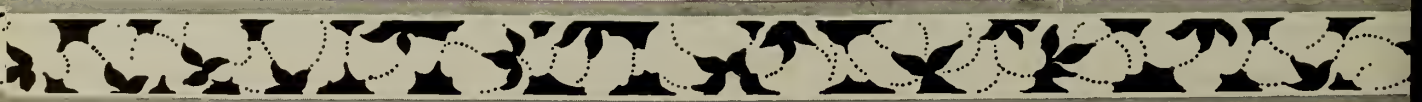
ELIZABETH BOBO . . . . Birmingham, Ala.      ISABELLA DAVIES . . . . Birmingham, Ala.  
EVELYN C. JOHNSON . . . . Birmingham, Ala.

*Class of 1936*

GWENDOLYN MELTON . . Birmingham, Ala.      ELLEN MAE PERRY . . . Birmingham, Ala.  
LULA WRIGHT . . . . . Bessemer, Ala.

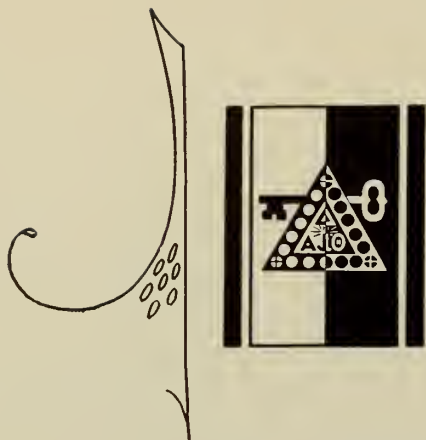
*Class of 1937*

LUCILLE BLACK . . . . Birmingham, Ala.      MARY LOU MILLER . . . Birmingham, Ala.  
RUTH HANKS . . . . . Birmingham, Ala.      EMILY MITCHELL . . . . Birmingham, Ala.  
ELIZABETH WHATLEY . . Birmingham, Ala.









"Lilies of the field, I bow to thee."—*J. R. Lowell*.

. . . . .

"Blessed are the pure in heart."—*The Bible*.

. . . . .

"Virtue is a jewel of great price."—*Latin proverb*.

. . . . .

"He who has lived in obscurity has lived well."—*Ovid*.



*Alpha Delta Theta*

*Dream Girl*

*There are girls in all fraternities,  
Girls whose hearts are beautiful and true.  
Wait until you see this girl of mine,  
And there will be only one girl for you.*

*My Alpha Delta Theta dream girl  
You're just a vision, sweet to me.  
When all the world's asleep in shadows,  
In a mystic land of dreams I see  
The fairest girl in all the millions,  
Just an inspiration true,  
A loyal friend and sister  
And an Alpha Delta Theta, too.*



# ALPHA • DELTA • THETA

Founded at Transylvania College, 1919



## PI CHAPTER

*Established 1929*

*Colors:* Turquoise, Silver and Scarlet.

*Flower:* Sweet Pea

*Publication:* "The Portals"

### SOROR IN FACULTATE

FRENCH HAYNES

### SORORES IN COLLEGIO

*Class of 1934*

MADA BERRY . . . . . Birmingham, Ala.	HAZEL JOHNSON . . . . . Birmingham, Ala.
MARY KAY BROWN . . . . . Birmingham, Ala.	DOROTHY PARKER . . . . . Meridian, Miss.
EDNA STEWART . . . . . Birmingham, Ala.	

*Class of 1935*

VIRGINIA COBB . . . . . Birmingham, Ala.	BARBARA MOOSE . . . . . Birmingham, Ala.
EBBA LOU MOON . . . . . Birmingham, Ala.	MILDRED RHODES . . . . . Birmingham, Ala.

*Class of 1936*

GRETA BURROUGHS . . . . . Birmingham, Ala.

*Class of 1937*

ROSEMARY CROOK . . . . . Birmingham, Ala.	LIBBY JEAN REEVES . . . . . Birmingham, Ala.
ELOISE DENTON . . . . . Talladega, Ala.	NELLE STEWART . . . . . Birmingham, Ala.
HAZEL MATTHEWS . . . . . Birmingham, Ala.	MARY VIRGINIA TURNER . . . . . Pell City, Ala.
ETHELYN ORR . . . . . Birmingham, Ala.	VIRGINIA WRIGHT . . . . . Guin, Ala.







# ALPHA • DELTA • PI

Founded at Wesleyan College, 1851



## KAPPA CHAPTER

*Established 1919*

*Colors:* Blue and White

*Flower:* Violet

*Publication:* "Adelphian"

### *Class of 1934*

MARY ALGEE . . . . . Birmingham, Ala.	SUE NEAL . . . . . Birmingham, Ala.
MARY ANDERSON . . . . . Thomasville, Ala.	JUNE SHARPLES . . . . . Birmingham, Ala.
EVELYN MANKER . . . . . El Paso, Texas	ERIN WALLACE . . . . . Birmingham, Ala.

### *Class of 1935*

MARTHA BRASFIELD . . . . . Dora, Ala.	HARDEE MARTIN . . . . . Birmingham, Ala.
---------------------------------------	--

### *Class of 1936*

GLADYS ALLDREDGE . . . . . Brooksville, Ala.	MADRENE ROTHERMEL . . . . . Birmingham, Ala.
EDITH COWAN . . . . . Birmingham, Ala.	MARJORIE SMITH . . . . . Birmingham, Ala.
VELMA NEAL . . . . . Birmingham, Ala.	ELIZABETH WEAKLEY . . . . . Birmingham, Ala.
LAVINIA YOUNG . . . . . Birmingham, Ala.	

### *Class of 1937*

GRACE ANDERSON . . . . . Thomasville, Ala.	MARY NELL HEARN . . . . . Albertville, Ala.
MOLLY ANDERTON . . . . . Birmingham, Ala.	MARY NELL HILL . . . . . Birmingham, Ala.
MARTHA JO BASS . . . . . Birmingham, Ala.	KATHERINE HUTCHISON . . . . . Troy, Ala.
MAKY ELIZABETH ESTES . . . . . Birmingham, Ala.	ERNESTINE JONES . . . . . Birmingham, Ala.
GRACE FULLER . . . . . Perryville, Ala.	JEAN LOYD . . . . . Birmingham, Ala.
JULIETTE FULLER . . . . . Perryville, Ala.	MARY McCARTY . . . . . Dothan, Ala.
ELIZABETH GOURLEY . . . . . Birmingham, Ala.	MAMIE MIDDLETON . . . . . Birmingham, Ala.
CATHERINE HAM . . . . . Birmingham, Ala.	RUTH PATTERSON . . . . . Birmingham, Ala.
MARGARET HARRIS . . . . . Birmingham, Ala.	MELL SCARBROUGH . . . . . Albertville, Ala.





"They toil not, neither do they spin."—*The Bible*.

"Those move easiest who have learned to dance."—*Pope*.

"It is wonderful how near conceit is to insanity."—*Jerrold*.

"A coquette is a young lady of more beauty than sense."—*Longfellow*.



# PHI • MU • SORORITY

Founded at Wesleyan College, 1852



## ALPHA GAMMA CHAPTER

*Established 1924*

*Colors:* Rose and White

*Flower:* Enchantress Carnation

*Publication:* "The Aglaia"

### SORORES IN FACULTATE

ANNIE BOYETT

MABEL WILLOUGHBY

### SORORES IN COLLEGIO

*Class of 1934*

ELIZABETH BROWN . . . Birmingham, Ala.

*Class of 1935*

EVELYN ANSLEY . . . Birmingham, Ala.	ELOISE MONTGOMERY . . Birmingham, Ala.
DORIS BRIDGES . . . Birmingham, Ala.	MARJORIE ROPER . . . Birmingham, Ala.
EVELYN GRIMMER . . . Birmingham, Ala.	EVELYN SUDDUTH . . . Birmingham, Ala.
BESS MCCOMAS . . . Birmingham, Ala.	ELIZABETH TILLER . . . Birmingham, Ala.
CLARA MCEACHERN . . . Louisville, Ala.	DOROTHY WALKER . . . Birmingham, Ala.
MARTHA MILES . . . Birmingham, Ala.	REBA WEAR . . . Coushatta, La.

*Class of 1936*

WILMA COLLINS . . . Birmingham, Ala.	MARGARET HOGAN . . . Birmingham, Ala.
MARJORIE DERBY . . . Birmingham, Ala.	MARTHA HUGGINS . . . Birmingham, Ala.
KATIE LOU HAMMETT . . Birmingham, Ala.	ELIZABETH McNEIL . . . Birmingham, Ala.
GERALDINE PATTERSON . . Gadsden, Ala.	

*Class of 1937*

MARTHA JULE BLACKSHEAR . Headland, Ala.	MARGARET STANTON . . . Birmingham, Ala.
JOSEPHINE LENZ . . . Birmingham, Ala.	JANE WHEELER . . . Birmingham, Ala.
LOUISE POWELL . . . Birmingham, Ala.	MARY LOUISE WHITE . . Birmingham, Ala.
MARY WATTIE WILSON . Birmingham, Ala.	







"Beauty and folly are often companions."—*Italian proverb.*

"Run not from one extreme to the other."—*Franklin.*

"Even beauty cannot palliate eccentricity."—*Balzac.*

"All is not gold that glitters."—*Æsop.*



# B E T A • P H I • A L P H A

Founded at University of California, 1909



## SIGMA CHAPTER

*Established 1928*

*Colors:* Green and Gold

*Flower:* Yellow Tea Rose

*Publication:* "Aldebaran"

### SORORES IN COLLEGIO

*Class of 1934*

MILDRED CLARK . . . . Birmingham, Ala.      RUBY HAGOOD . . . . Birmingham, Ala.  
KATHERINE UPSHAW . . Birmingham, Ala.

*Class of 1935*

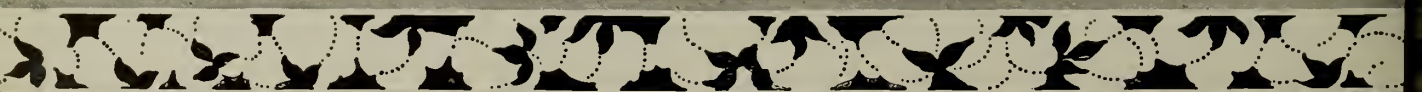
RUTH GRAVES . . . . Birmingham, Ala.

*Class of 1936*

MILDRED WILKINSON . . Birmingham, Ala.      CAROLYN WILLIS . . . . Birmingham, Ala.

### *Graduate Students*

LILLIAN CUNNINGHAM . . Birmingham, Ala.      DINNIE MAE MACKEY . . Birmingham, Ala.  
ANNIE RUTH WYNN . . Birmingham, Ala.





"They always talk who never think."—*Prior.*

"They agree like cats and dogs."—*Socrates.*

"Beauty is as beauty does."—*French proverb.*

"Let no day pass without its line."—*German proverb.*





Hazel: "What's the greatest Greek tragedy?"  
Virginia: "You know I never knock other sororities."





FEATURES AND ADS





B · E · A · U · T · Y



*Mary Ellen Adkins*





*Gladys Alldredge*





*Anne Davie*



*Sara Ferrell*





*Zelma McKewen*





*Dorothy Walker*



# The Howard Crimson

SOME YEAR

NUMBER 0

## SECRET SEX ORGANIZED AT HOWARD

### THE COMIC-TATER

By Crawfish Saunders

The question of Spring holidays is one that will intrigue the most careless student. The writer is in favor of Spring holidays. It is his opinion that they should extend from Feb. 1 to June 1, with two weeks off for good behavior. Just think of all the extra trouble it would save the professors who have papers to grade.

*Howard College will forever be indebted to those artists who have taken such an interest in us and donated pictures. For instance, take that picture in the hall of the Main Building called "St. George Slaying The Goat." Yes, take it—and don't bring it back!*

The writer is of the opinion that the dogs down at the Science Hall are of a better quality than in previous years. Just any Spring day, one may wander by the Science Hall and encounter a pack of assorted dogs that are in a class by themselves. Whereas, in past years, there was a predominance of poodles and pugs, this year finds the collection composed of mongrels and hounds.

*The writer finds, after trying all the rest of the places, that the best place to loaf on the campus is any one of the new sorority houses. But, of course, it's against the rules.*

As a parting word, we hope everybody mentioned in this final issue of the *Crimson* "can take it." If not, the line forms to the right.

### Degrees Are To Be Awarded at Commencement

According to the Dean, the following degrees will be awarded at commencement:

*Master of Parliamentary Law*—Lamar Kennedy.

*Bachelor of Sarcasm*—Bess McComas.

*Master of Females*—J. B. Gwin.

*Flitt D.*—Quick Henry.

*I. O. U.*—All professors.

*Bachelor Emeritus*—Prof. Lohr.

*Master of Ceremonies*—Amasa Windham.

*Doctor of Finance*—Claude Smith.

### HONEYBRITCHES CLUB RECENTLY ORGANIZED

#### NINETEEN CHARTER MEMBERS

A new organization that is fast becoming notorious on the campus is the Honeybitches Club, recently disapproved by the Dean. Charter members are Francis Wheeler and Martha Huggins, Henry Smith and Jo Lenz, Swede Lawson and Gretchen Brown, Eddie Wojecki and Isabella Davies, Everett Ingram and Katie Lou Hammett, Mike Wells and Madrene Rothermel, Barnett Wiggins and Elizabeth Brown, Harlan Ogle and Mildred Brook, Paul Freeman and Mada Berry, Beth Weakley and herself.

### Tom Everetts and Lamar Williams To Head New Organization

### CHEATING BANNED EXCEPT IN CASE OF EMERGENCY

The editor of this final edition of the *Crimson* is glad to give his approval, but nothing else, to a new organization just formed on the Howard campus. The group calls themselves The Secret Sex. The students call them — well, never mind.

Anyway, the purpose of the organization is to eliminate cheating in the classes of cooking and art. Miss Holloway reports that cheating is rampant in her classes. Students snitch a piece of cake every time they get the opportunity, said the fair instructress.

The first student caught cheating will be reported to the faculty and if the faculty don't do something about it, they are big sissies—so there!

Classes where no cheating occurs, such as Dr. L. O. Dawson's, will not be investigated, but classes such as Dr. Mason's, where the student is forced to get answers to questions by thinking, will be thoroughly looked into.

# The Howard Crimson

Published just once (once too often) by a few students who had nothing else to do.

The purpose of *The Howard Crimson* is to publish news about people that they wouldn't publish about themselves; to further the best interests of the editors by disregarding the interests of students, alumni, and friends.

Acceptance for mailing is doubtful.

Subscription Rate . . . . . *Priceless Edition*  
 PROFESSOR WHOOSIS . . . . . *Chief Anannias*

## AN EDITORIAL

### THE RUSSIAN SITUATION AT A GLANCE

What is France going to do about the price of Bermuda onions? Nothing! Who the Hell said France was? Think, you students of ancient languages, what such a move means to the campus. Editor Wiggins has pointed out clearly in his new book "Alice In Wonderland," what the effect of this move will mean. Men like Sinclair Lewis, Stan Laurel, Oliver Hardy and Henry Ford have proven definitely that Siam does not care a hang about onions—nor anything else. The entire matter should be referred to the Secret Six, we think—yes, we do think, too—and they should either dispose of the matter or dispose of it.

### 18 YEARS AGO

(As recorded in the files of *The Howard Crimson*.)

Dr. W. M. Thomas celebrated his 85th birthday today.

Amasa Windham and Barnett Wiggins entered school today as freshmen.

## Book Lovers' Club To Meet

Miss Annie Ruth Wynn will discuss "The Sins of Elmer Gantry" and her neighbors. Miss Mabel Hudson will review "I'm A Lonesome Little Flower" and Miss Eva Hargrave will sing "Aren't We All?" Dorothy McKinney will read "Her Private Love Letters." Everybody will listen with interest. Miss Annie Boyctt, faculty advisor, will advise.

Dr. Jas. A. Hendricks has just rounded out forty years of service in the Economics Department.

The Theta Kappa Nus have been declared winners in the church-going contest.

Dr. L. O. Dawson has introduced a new system of conduct in class, which he borrowed from the Barrett School primary department.

Dr. Henry M. Martin was seen purchasing a new green suit and a brown hat today.

Item: No Garretts from Albertville have entered school this year.

## S-P-O-R-T-S

### Howard Football Team Takes Off Honors

The Howard College football team took off all honors the past season including the S. I. A. A. championship, the Dixie Conference championship, the city championship, seven suits of clothes, 81 towels, 3 bed spreads and 14 sets of silver.

### FOOTBALL ROSTER

Name	Position	Weight
"Old" Homestead	Center	3-2
"Miss" Mate	Full	310
"Artesian" Wells	Guard	6 7-8
"Ice" Burger	Tackle	99 44-100
"Me 'N" Ewing	Quarter	7-11
"Un" Dunn	Tackle	100
"Inna" Garrett	End	13
"Give 'Em" Fitzpatrick	Nuisance	1 ton

### Howard Wrestling Team To Meet Southern Tomorrow

A series of bouts has been arranged between the Howard matmen and Birmingham-Southern, according to Eddie Wojceki, manager. Wrestling in the lightweight class, Mary "Tarzan" Graves will take on all comers. Ray "Jack the Ripper" Holmstead will also participate in this class. Middleweight wrestlers are Erin "Big Boy" Wallace, J. B. "Lon Chaney" King and Mark "Strangler" Lower. In the heavyweight division, Estha Mae "Russian Lion" Irwin will take on all matmen above the 300-pound mark.



# .. SOCIETY ..

Mr. Sevarin-Frost and Mrs. Sevarin-Frost have returned from Baden-Baden and are stopping at the Barbizon - Plaza through Wednesday-Wednesday.

The Howard Masquers will present their latest production, "The Covered Wagon," next Friday night. Mr. Jack Robertson will play the rear axle.

Mrs. Berry will present her daughter, Mada, to society next Tuesday night. Society will retaliate at the first opportunity.

Mr. Howell Bennett attended a drinking party last week. Both parties have now sobered up.

Miss Martha Huggins used to take her dog for a walk every day, but has now learned to distinguish between them quite clearly.

The Pi Kappa Phi hotel has announced reduced rates and no doubt will attract a flock of tourists next year.

Miss Majel Mangun went for a tramp the other day, but the tramp died.

Messrs. Clarence Clinkscales, Dolphus Barnett and Melvin Hyatt have recently been experimenting with coiffures. It is said they have unanimously agreed upon the Southern bob.

## Sigma Nus Have Party for Themselves

The Sigma Nus entertained themselves last Tuesday evening back of the Science Hall. Little Campbell Kidd, borrowed from Crumpton's Kindergarten for the occasion, served punch. Gags and burps were enjoyed. Thomas Michael Floyd III, son of Thomas Michael Floyd II, grandson of Thomas Michael Floyd I, brought a date. She was unmarried. The party was a success. Joe "Ears" Wurtele and Tom Douglas were not present. Miss Lillian Cunningham acted as chaperone. No alumni were present, Robert Ansley not being counted.

## ADS

EVERYBODY should go over and dance at the new Picnic Night Club. (The Editor gets passes.)

EMPTY bottles, all sizes and makes, for sale. Apply Sigma Nu House.

HOUSE FOR SALE—If you won't buy it, how much can we give it to you for? Pi Kappa Phis.

WANTED—Some good men. The supply of little brothers is short and we will be glad to interview most anybody. Apply Pi Kappa Alpha House.

WANTED—More roomers and less rumcrs. See the Sigma Phi Epsilons.

WANTED—A girl. Not particular as to size, shape or color. Must have a strong neck. Apply to Ed Mason.

LOST—All our power. If found, return to the A. D. Pi's and receive reward.

WILL EXCHANGE—One good moustache for some brains. See Giles A. Baker, immediately.

BE AN accomplished "smoccher." Free lessons in "smooching" to first fifty applicants. Call or apply to A. D. Pis, A. D. Thetas, B. S. O's, Beta Phi Alph's, Delta Zeta's or Phi Mu's.

## STUCK INN

Hamburgers— Beer— High-Brow Eats  
Hot Dogs                  Pool Supplies

BULL BAINES, '96, Manager

## DAVENPORT

the cigarette that's WILDER . . . .  
the cigarette that tastes BITTER

## SPITZ

Friday  
and  
Saturday

Lotta Garbage

IN

"Her Weak  
Moment"

# IN APPRECIATION



We, the 1934 ENTRE NOUS Staff,  
wish to take this opportunity to  
thank the business men of Birming-  
ham for the financial aid and co-  
operation which they gave to us,  
making this annual possible



*SHOW YOUR APPRECIATION  
BY PATRONIZING THEM*

# HOWARD COLLEGE

---

Owned and Controlled by

## THE BAPTISTS OF ALABAMA

Howard College is a standard A-Grade College of Arts and Sciences. It is a member of the Southern Association and is on the approved list of the Association of American Universities and the American Association of University Women. Its academic credits are accepted fully by the universities and professional schools of this and other countries.

Howard College is alive with the hardy vigor of ninety-two years of increasing usefulness and prestige. It is a friendly school. It offers advantages, educational, cultural, and recreational, such as only a large city affords.

Two recent graduates of Howard College are now in Oxford University, holders of Rhodes Scholarships won in competitive selections in successive years, 1930, 1931.



*For Catalogue and Other  
Information Address*

**PRESIDENT T. V. NEAL**

**Birmingham, Alabama**

*COMPLIMENTS OF*

**HILL GROCERY  
COMPANY**



**BIRMINGHAM, ALABAMA**

The Distinction of BALFOUR JEW-  
ELRY is assured in the College  
World

*COLLEGE RINGS  
FRATERNITY BADGES  
CRESTED STATIONERY  
COMMENCEMENT INVITATIONS*

MAKER OF THE SENIOR CLASS RINGS  
AND INVITATIONS FOR HOWARD  
COLLEGE

**L. G. BALFOUR  
C O M P A N Y**

**ATTLEBORO, MASS.**

*COMPLIMENTS OF THE*

**FIRST NATIONAL BANK**

**OF BIRMINGHAM**



**BIRMINGHAM, ALABAMA**





## CHOOSE THE RIGHT COURSE

The position of private secretary is attractive to both young men and young women. Each day you make new contacts, participate in new activities, and have presented to you new problems to challenge your ingenuity and ability. You will be interested in the following advantages of such a position:

- Social prominence
- Technical knowledge and skill
- Recreational advantages
- Summer trips
- A profession worthy of your best efforts
- It challenges your creative ability
- It develops your personality, poise, and confidence
- Solves your financial problems
- Paves the way to an executive position.

Mrs. Eleanor Suddeth, a graduate of Howard, whose photo appears on this page, chose the Secretarial Course, and is now with the Jasper Abstract Co., Jasper, Alabama.

## WHEELER BUSINESS COLLEGE

Elevator Entrance  
1911 FIRST AVENUE  
Birmingham, Alabama

Compliments of  
**BRILLIANT COAL  
COMPANY**

1812-17 Webb-Crawford Building  
Birmingham, Alabama

PRODUCERS OF  
GENUINE  
**BRILLIANT  
COAL**

(Trade Mark Reg. U. S. Patent Office)

*The South's Finest Fuel*

**LUMP, EGG, NUT, STOKER**

A SIZE FOR EVERY  
DOMESTIC USE

## Silver Spoons

Once upon a time there was a legend that only those born with silver spoons in their mouths could afford to be well dressed.

Today, money has no monopoly on style. At Loveman's the person who is not above counting pennies can choose the same distinctive fashions as the one who hasn't time to count the dollars.

Good taste has supplanted the silver spoon, as the "Open Sesame" to the inclusive circle of well-dressed people.

**LOVEMAN, JOSEPH  
& LOEB**



Back of All Gulfsteel Products Stands the South's Largest Independent  
Manufacturer of Finished Steel

## GULF STATES STEEL COMPANY

Brown-Marx Building  
BIRMINGHAM, ALABAMA

Ingots  
Billets  
Slabs  
Wire Rods  
Bars  
Plates  
Angles  
Sheets

Welding Rods  
Bright Wire  
Annealed Wire  
Galvanized Wire  
Barbed Wire  
Manufacturers' Wire  
Wire and Rods  
Straightened and Cut

Woven Wire Fence  
Nails  
Galvanized Nails  
Cement Coated Nails  
Staples  
Bale Ties  
Fence Posts



MISS NAOMI GOODWIN

GRADUATED FROM HOWARD IN 1932

ATTENDED MASSEY IN 1933

*NOW*

HOLDS A RESPONSIBLE POSITION IN A LEADING  
DOWNTOWN ESTABLISHMENT

*For Forty-five Years "Massey" has trained Young Men and Women for  
Executive Positions. They Can Help You.*

Call 3-7278

MASSEY BUSINESS COLLEGE  
FOR CATALOG

BOYETT'S PHOTO  
STUDIO

*Wishes to Express Appreciation at the  
Opportunity to Serve As*

Official Photographer  
for the  
1934 Entre Nous

BOYETT'S PHOTO  
STUDIO

2022½ Second Avenue, N.  
Birmingham, Alabama

A PLACE TO SAVE  
ALWAYS

HAVERTY  
FURNITURE CO.

2108 First Avenue, N.

"Good Clothes"

BLACH'S

INVEST THE INTEREST, COLLECT THE  
PRINCIPAL

*And a Wealth of Mental Satisfaction Through Life Insurance*

JEFFERSON STANDARD LIFE  
INSURANCE CO.

ALBERT LEE SMITH  
GENERAL AGENT

212½ Twenty-first Street

Birmingham



BOOKKEEPING, CIVIL SERVICE  
SHORTHAND

*Alabama's Largest Business College*

Enter At Any Time

Telephone 4-3306

AN ACCREDITED BUSINESS COLLEGE

**ALVERSON  
BUSINESS  
COLLEGE**

ROBERT E. ALVERSON, *President*

2019-2021 First Avenue  
BIRMINGHAM, ALABAMA

*Write or Call for Catalog—Day and Night Classes*

TYPEWRITING, SECRETARIAL  
HIGHER ACCOUNTING

*"In the Spring a  
Young Man's Fancy"*

AND THE CO-ED'S ALSO WHEN  
OUTFITTED AT

**CAHEEN'S**

+

1921 Third Ave.                      Birmingham

*Compliments of*

**THE TUTWILER**

♦

R. BURT ORNDORF

Manager

*Compliments of*

**THE EMPIRE  
THE ROYAL**

*and*

**THE CAPITOL  
THEATRES**

*Everything*

*For Every Sport*

**Wimberly & Thomas  
Hardware Co.**

2011 First Avenue

Do you want to know if  
you are going to succeed?  
There is but one sure test: Can  
you save money? If not —  
drop out, for the seeds of  
success are not in you.  
— James J. Hill.

LET US SHOW YOU WHY LIFE INSURANCE IS  
THE BEST SAVINGS PLAN

**The LIFE INSURANCE COMPANY of VIRGINIA**

Established 1871

RICHMOND, VIRGINIA

Bradford H. Walker, President

**WM. A. BERRY**

Manager for North Alabama

1826-28 COMER BUILDING

BIRMINGHAM, ALABAMA

**WOOD FRUITTICHER  
GROCERY CO., INC.**

*Wholesale Grocers*

Exclusive Distributors

**Ruttlow California Fruits and  
Vegetables**

**BLUE LABEL N. Y. STATE FRUITS AND  
VEGETABLES**

**SHOE SERVICE SHOP**

*CLEANING, PRESSING, DYEING  
HATS CLEANED AND BLOCKED*

Low Prices and High Quality

**JAKE ROSE**

*THE HOUSE OF SERVICE*

16 North 77th Street

**Gibbs Drug Company**

*Two Good Drug Stores Serving  
East Lake*

8301 First Ave. 8000 Second Ave.

**LEHMAN M. ALLEY  
RICHARD I. LANIER  
OWNERS**

**A & P FOOD  
STORES**



Birmingham, Alabama

**JOHN H. ROPER**

*FANCY GROCERIES, FRESH  
MEATS AND VEGETABLES*



Phone 9-4601

4 North 77th St.

**WE DELIVER**

*. . . Price without extravagance for  
clothes without apology—*



**DANIEL CLOTHING  
COMPANY**

1912 First Avenue, North

*Factory-to-You*

*COMPLIMENTS OF*

**RHODES-CARROLL'S  
FURNITURE COMPANY**

2020 THIRD AVENUE, N.

YEILDING BROS. CO.  
THE OLDEST DEPARTMENT STORE IN  
BIRMINGHAM  
2131 Second Avenue, N.

*Compliments of*  
**Martin Biscuit Co.**

*Compliments of*  
**SLATER'S BOOT SHOP**  
1915 Second Ave., N.  
Birmingham

*Compliments of*  
**DUCK INN**  
BILL BAINES, '26, Manager

*Compliments of*  
**BERRY'S**  
1907 THIRD AVE., NORTH

**J. PAUL HENDRIX, INC.**  
TYPEWRITERS

<i>Sales</i>	<i>Service</i>	<i>Supplies</i>
Top Floor Farley Bldg.		3-4906

*Compliments of the*  
**BONNET BOX**

1815 Second Avenue  
Birmingham

**NEWMAN'S CLEANERS**

Office and Plant:  
5601 First Ave., South—9-2131  
Office: 13 North 77th St.—9-2929

## DO YOU KNOW—

That Howard's enrollment has not fallen off even in these bad years?

That the Senior Class for years has been larger than the entire student body in 1900?

That Howard has outstanding missionaries in China, South Africa, Palestine, Japan, and other foreign fields?

That an alumnus is in the diplomatic service in Paris, France?

That a Howard alumnus is now president of Howard?

That a Howard alumnus is head of the Department of Spanish in Ohio State University?

That a Howard alumnus is former Federal District Attorney in New York City?

That a former Chief Justice of the Supreme Court of Alabama was a Howard graduate?

That a Howard graduate and former professor is a professor in the University of North Carolina?

That five Howard professors are authors of text-books, and that nearly all the professors have published scholarly articles?

That Howard has an outstanding though new Department of Dietetics?

That Howard has a trained specialist as Director of Physical Education for Women?

That Howard has probably the best departments of Chemistry, Biology, and Physics in the South?

That a Howard professor is organist in the largest Baptist church in Birmingham, and is a musician of international celebrity as a composer?

That the Dean of the College of Pharmacy, University of Tennessee, is a Howard graduate and that he is the author of widely used text-books?

That Dr. William Thomas, Professor of Greek and Latin, was the Fourth of July orator in Athens, Greece, a couple of summers ago?

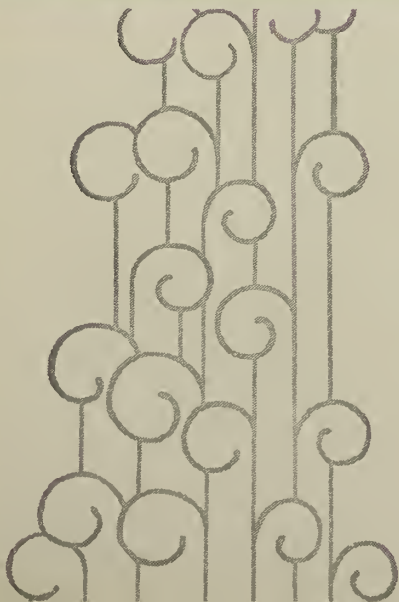
That Howard is a leader in the technical academic teaching of religious education?

That two Howard graduates were chosen in consecutive years for Rhodes Scholarships?

That Howard graduates have taught and are teaching in some thirty leading colleges and universities of this country, including Harvard, North Carolina, Virginia, Alabama, Louisiana, Texas, and Cincinnati?



bright pages . . . .



. . . that reflect those happy,  
carefree days has been our  
goal . . . .

♦ COLLEGE ♦ ANNUAL ♦ DIVISION ♦

ALABAMA  
ENGRAVING  
COMPANY  
BIRMINGHAM

“IN THE HEART OF THE SOUTH”

THIS BOOK PRINTED BY.....



THE  
WORLD'S  
LARGEST  
PUBLISHERS  
OF  
COLLEGE  
ANNUALS



**COLLEGE ANNUAL HEADQUARTERS**

*Highest Quality Workmanship Superior Extensive Service*





I'SE DONE













